

# CROSS070

## MISTURADORA EMBUTIR LAVATÓRIO PAREDE CROSSLINE



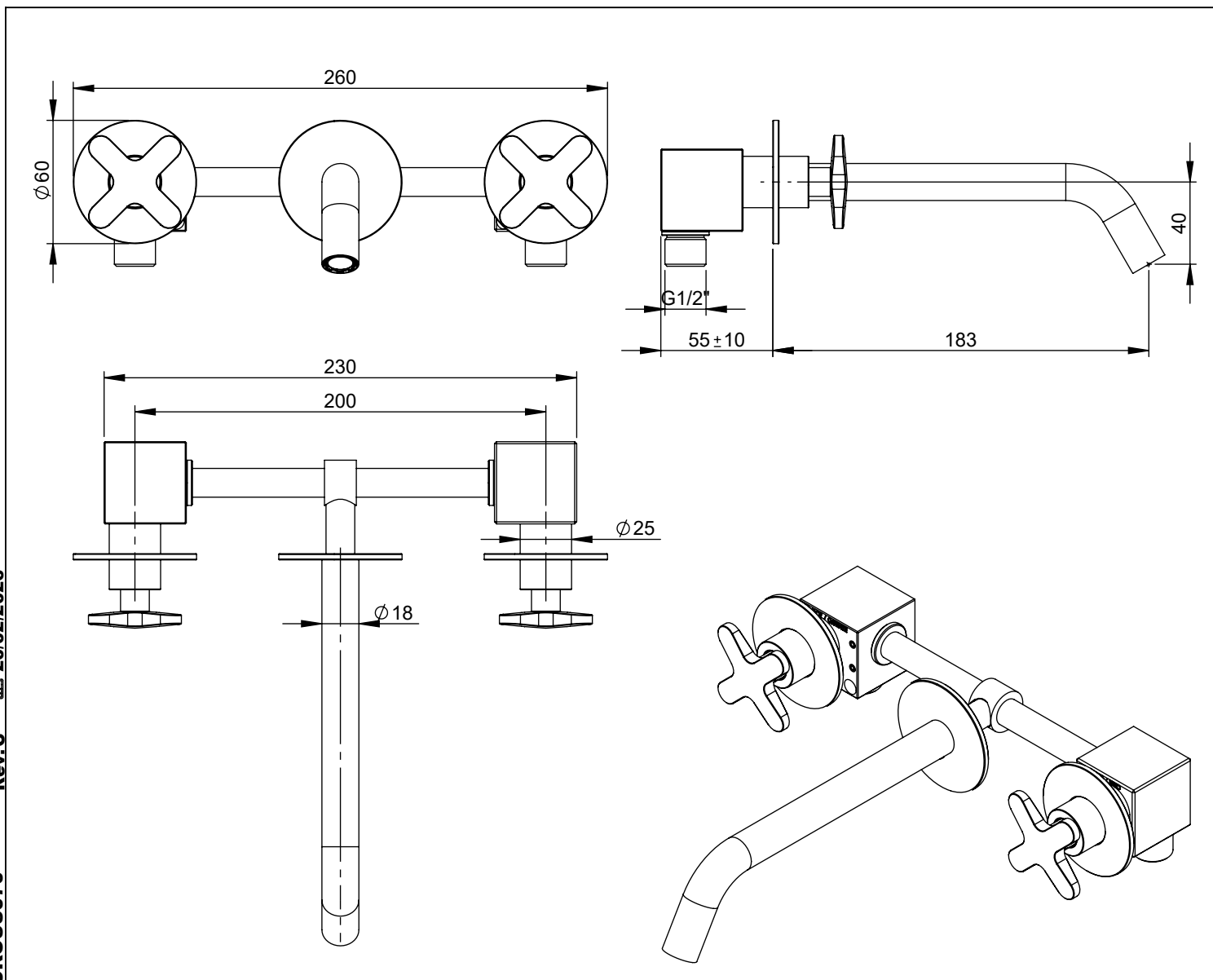
ASM TAPS®

WATER SOUL

**EN** CONCEALED WASHBASIN MIXER CROSSLINE

**FR** MÉLANGEUR LAVABO ENCASTRÉE CROSSLINE

**ES** MEZCLADOR LAVABO EMPOTRAR CROSSLINE



CROSS070 Rev. C 20/02/2026

### CARACTERÍSTICAS TÉCNICAS

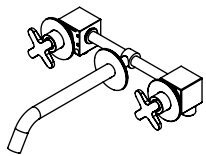
|  |             |
|--|-------------|
| PRESSÃO RECOMENDADA:<br>RECOMMENDED PRESSURE:        | 3 - 4 BAR   |
| TEMPERATURA RECOMENDADA:<br>RECOMMENDED TEMPERATURE: | 15°C - 65°C |
| MATERIAIS:<br>MATERIALS:                             | Latão       |
| TEMPERATURA MÁXIMA:<br>MAXIMUM TEMPERATURE:          | 70°C        |
| CAUDAL MÁXIMO A 3 BAR:<br>MAXIMUM FLOW AT 3 BAR:     | 5L/MIN      |
| LIGAÇÃO DE ENTRADA:<br>INPUT CONNECTION:             | G1/2"       |
| LIGAÇÃO DE SÉIDA:<br>OUTPUT CONNECTION:              | G1/2"       |
| PESO (KG):<br>WEIGHT (KG):                           | 1,42        |
| DIMENSÕES EMBALAGEM (MM):<br>SIZE PACKAGING (MM):    | 274x162x102 |

### ACABAMENTOS

|  |
|--|
| CR - CROMADO   CHROME   CHROME   CROMO                             |
| PR - PRETO MATE   BLACK MATT   NOIR MAT   NEGRO MATE               |
| BR - BRANCO MATE   WHITE MATT   BLANC MAT   BLANCO MATE            |
| ST - SATINOX   SATINOX   SATINOX   SATINOX                         |
| AT - ANTRACITE   ANTHRACITE   ANTHRACITE   ANTRACITA               |
| GM - GUNMETAL   GUNMETAL   GUNMETAL   GUNMETAL                     |
| GMM - GUNMETAL MATE   GUNMETAL MATT   GUNMETAL MAT   GUNMETAL MATE |
| OR - DOURADO   GOLD   DORÉ   DORADO                                |
| ORM - DOURADO MATE   GOLD MATT   DORÉ MAT   DORADO MATE            |
| CB - COBRE   COPPER   CUIVRE   COBRE                               |
| CBM - COBRE MAT   COPPER MAT   CUIVRE MAT   COBRE MATE             |

### TECNOLOGIA

-  AC1360 - CASTELO CERÊMICO  
AC1360 - CERAMIC VALVE
-  Embutido a parede  
Built-in to wall
-  Perlator Embutido  
Built-in Aerator



# CROSS070

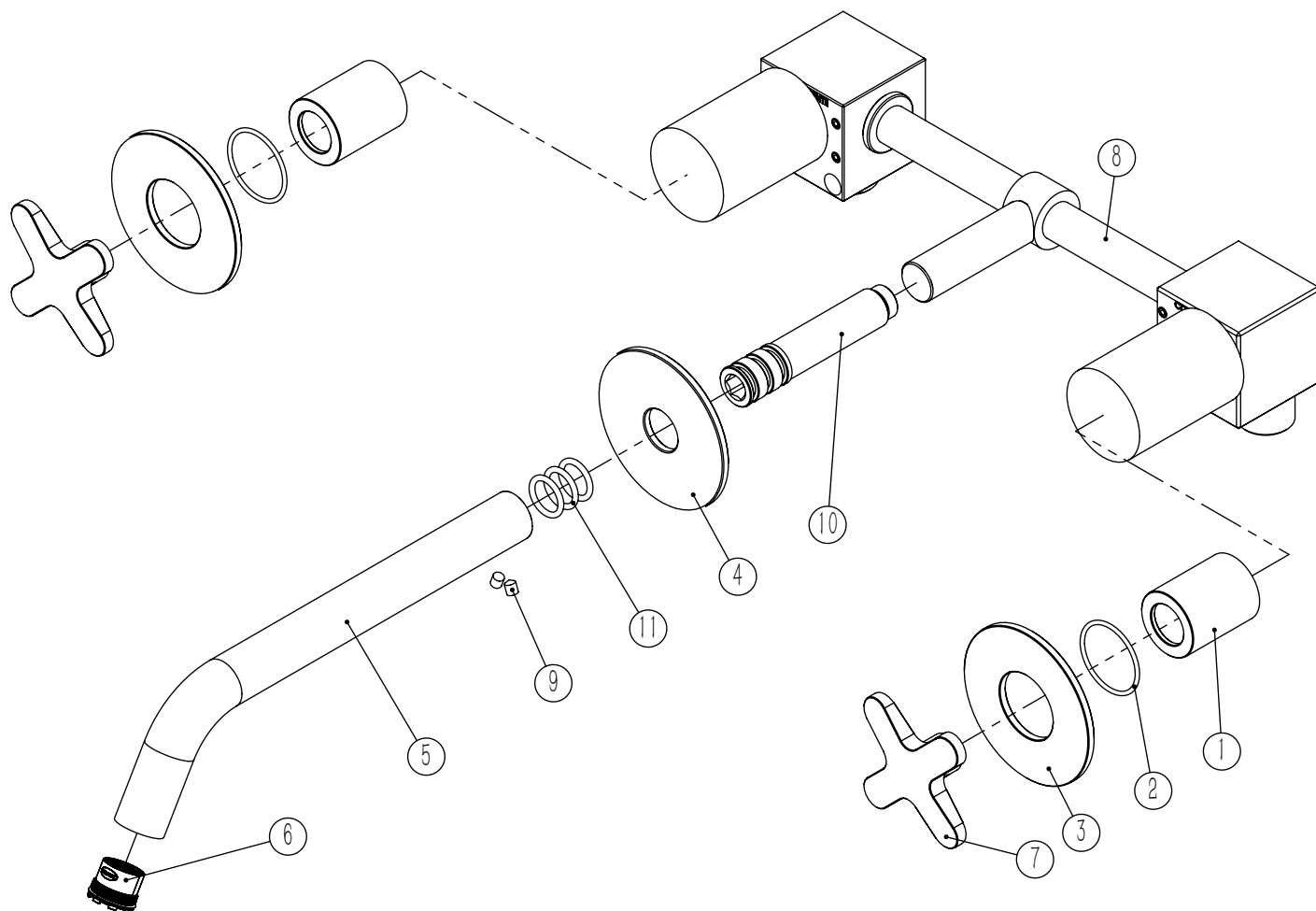
MISTURADORA EMBUTIR  
LAVATÓRIO PAREDE CROSSLINE



ASM TAPS®

WATER SOUL

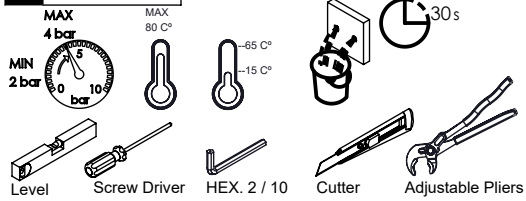
## LISTA DE COMPONENTES



CROSS070 Rev.C 20/02/2026

| Nº | DESCRIPTION                                 | REF.          | QT. |
|----|---|---------------|-----|
| 1  | Campanula Passador M24x1 Cruzeta070         | 100858        | 2   |
| 2  | Orings 25.00x.50 NBR 70                     | 001102        | 2   |
| 3  | Pater Fixação Bica Teto Cilindrica          | 100336        | 2   |
| 4  | Pater Bica Cilindrica Parede                | 100150        | 1   |
| 5  | Bica Parede Slim                            | 100410        | 1   |
| 6  | Perlator 16,5x1 Cilindrico/Quadra           | AC850A        | 1   |
| 7  | MANÍPULO CROSSLINE                          | AC2360        | 2   |
| 8  | BOX MISTURADORA LAVATÓRIO ENCASTRAR BIMANDO | INT103        | 1   |
| 9  | Perno Umbrako Din 916 M4-5 Inox A-2         | 09140400050IN | 2   |
| 10 | PONTEIRA BICA PAREDE SLIMASM                | 100038        | 1   |
| 11 | Orings 10.00x2.00 NBR 70                    | 001367        | 4   |

# ! SERVICE



# CROSS070

## MISTURADORA EMBUTIR LAVATÓRIO PAREDE CROSSLINE

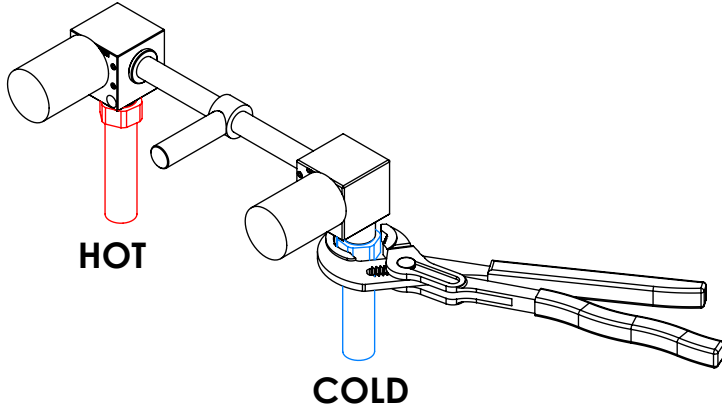


A S M T A P S ®

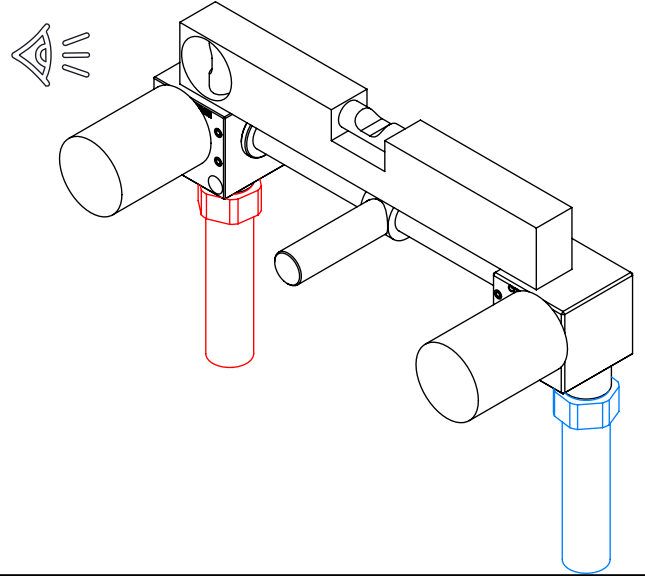
W A T E R S O U L

### INSTALLATION MANUAL

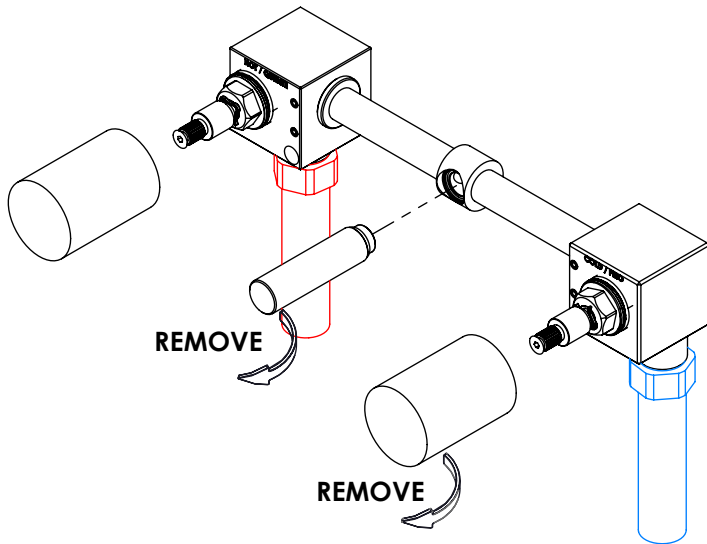
#### 1 CONECTION



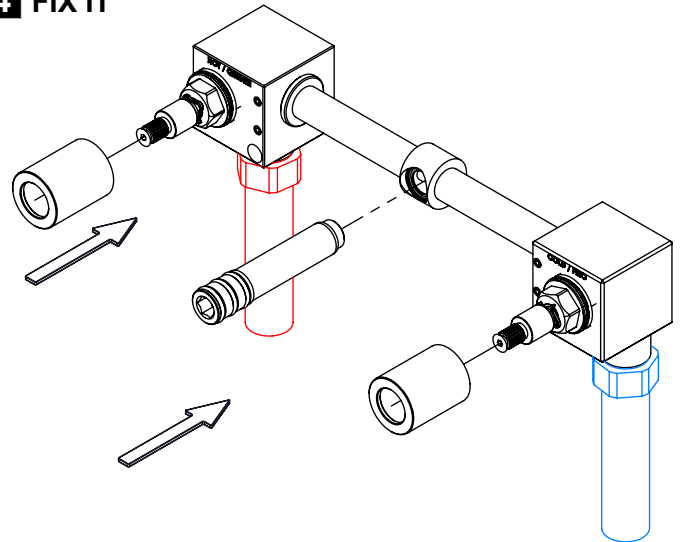
#### 2 FIXED



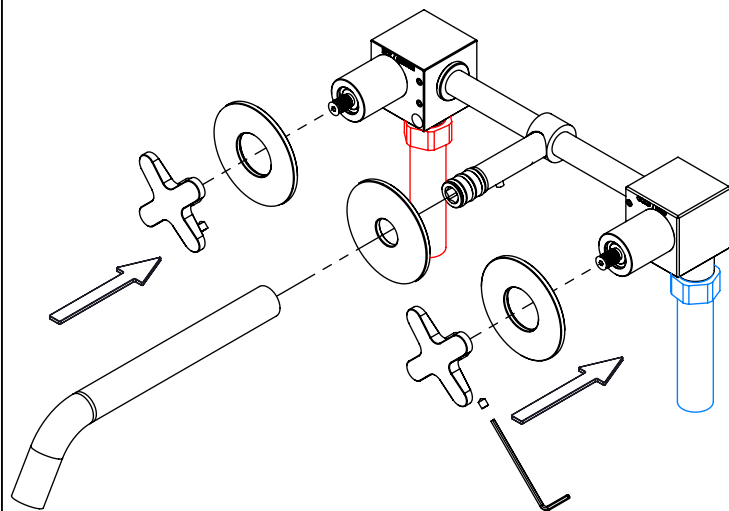
#### 3 REMOVE PROTECTION



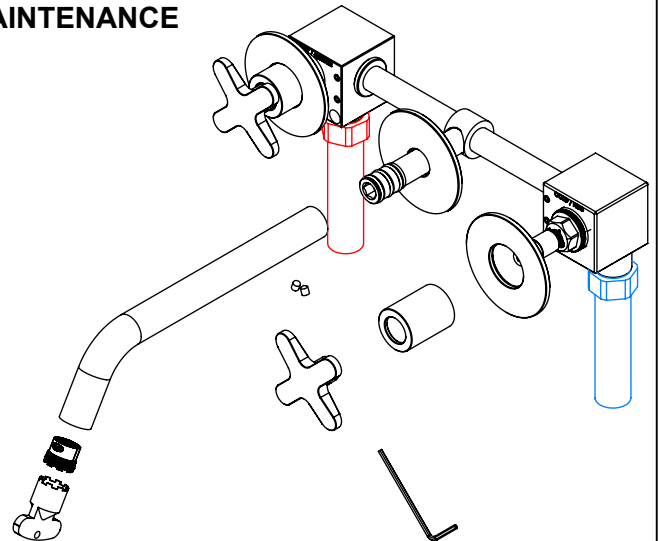
#### 4 FIX IT



#### 5 FIX IT



#### 6 MAINTENANCE



CROSS070 Rev. C 20/02/2026