

CROSS080

MONOCOMANDO EMBUTIR BANHO/DUCHE 2 VIAS CROSSLINE



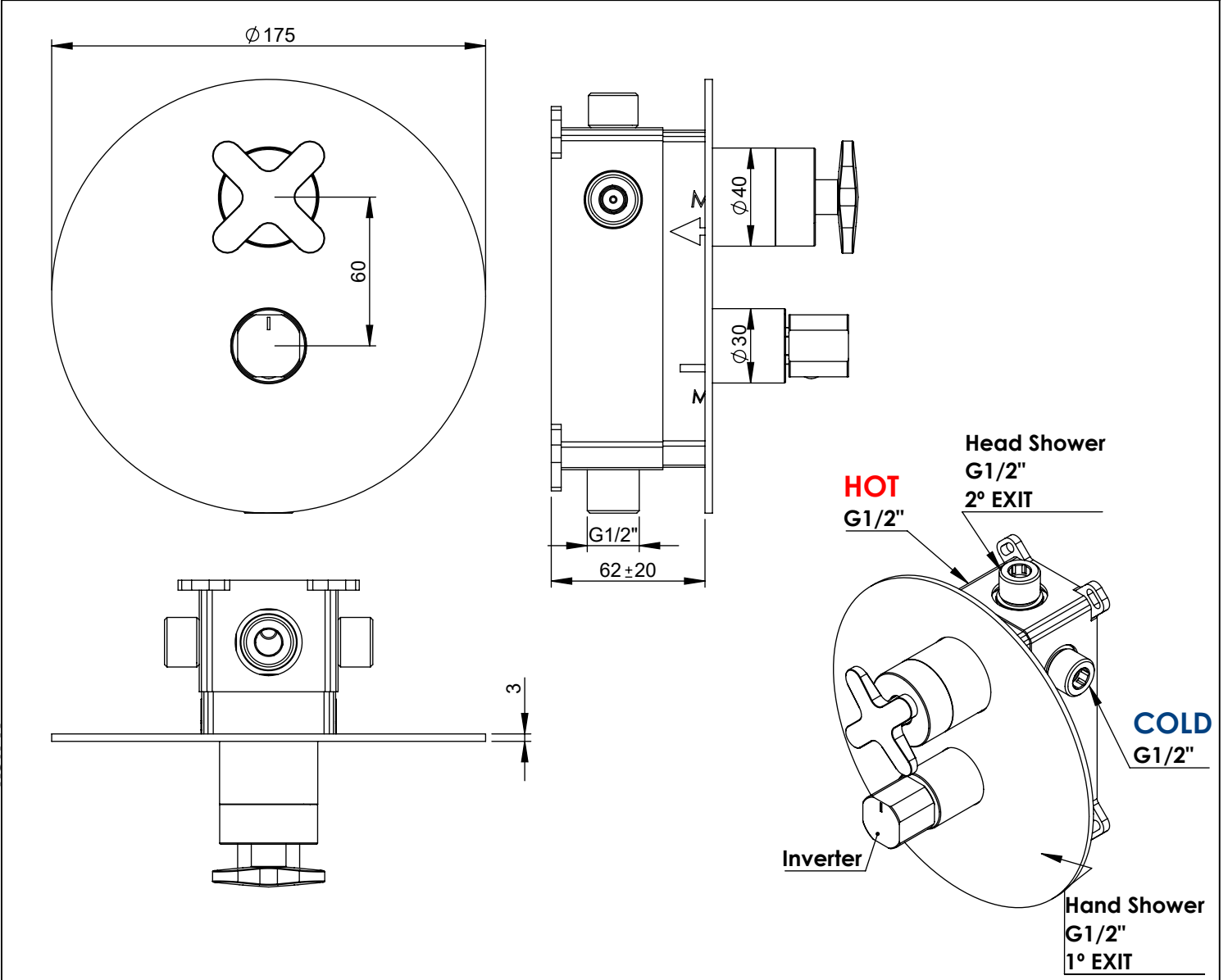
A S M T A P S[®]

W A T E R S O U L

EN CONCEALED 2 WAY BATH/SHOWER MIXER CROSSLINE

FR MITIGEUR BAIGNOIRE/DOUCHE ENCASTRÉ 2 VOIES CROSSLINE

ES MONOMANDO BAÑO/DUCHA EMPOTRAR 2 VIAS CROSSLINE



Rev. A 26/11/2025

CROSS080




CARACTERÍSTICAS TÉCNICAS

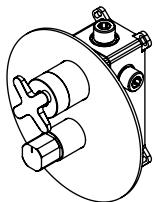
PRESSÃO RECOMENDADA: RECOMMENDED PRESSURE:	3 - 4 BAR
TEMPERATURA RECOMENDADA: RECOMMENDED TEMPERATURE:	15°C - 65°C
MATERIAIS: MATERIALS:	Latão
TEMPERATURA MÁXIMA: MAXIMUM TEMPERATURE:	70°C
CAUDAL MÁXIMO A 3 BAR: MAXIMUM FLOW AT 3 BAR:	L/MIN
LIGAÇÃO DE ENTRADA: INPUT CONNECTION:	G1/2"
LIGAÇÃO DE SÉIDA: OUTPUT CONNECTION:	G1/2"
PESO (KG): WEIGHT (KG):	2.21
DIMENSÕES EMBALAGEM (MM): SIZE PACKAGING (MM):	274x162x102

ACABAMENTOS

CR - CROMADO CHROME CHROME CROMO
PR - PRETO MATE BLACK MATT NOIR MAT NEGRO MATE
BR - BRANCO MATE WHITE MATT BLANC MAT BLANCO MATE
ST - SATINOX SATINOX SATINOX SATINOX
AT - ANTRACITE ANTHRACITE ANTHRACITE ANTRACITA
GM - GUNMETAL GUNMETAL GUNMETAL GUNMETAL
GMM - GUNMETAL MATE GUNMETAL MATT GUNMETAL MAT GUNMETAL MATE
OR - DOURADO GOLD DORÉ DORADO
ORM - DOURADO MATE GOLD MATT DORÉ MAT DORADO MATE
CB - COBRE COPPER CUIVRE COBRE
CBM - COBRE MAT COPPER MAT CUIVRE MAT COBRE MATE

TECNOLOGIA

-  AC1340 - Cartucho Ø35 Progressivo
AC1340 - Progressive Ø35 Cartridge
-  AC1840 - Distribuidor 2 vias Ø25
AC1840 - 2 way distributor Ø25
-  Embutido a parede
Built-in to wall



CROSS080

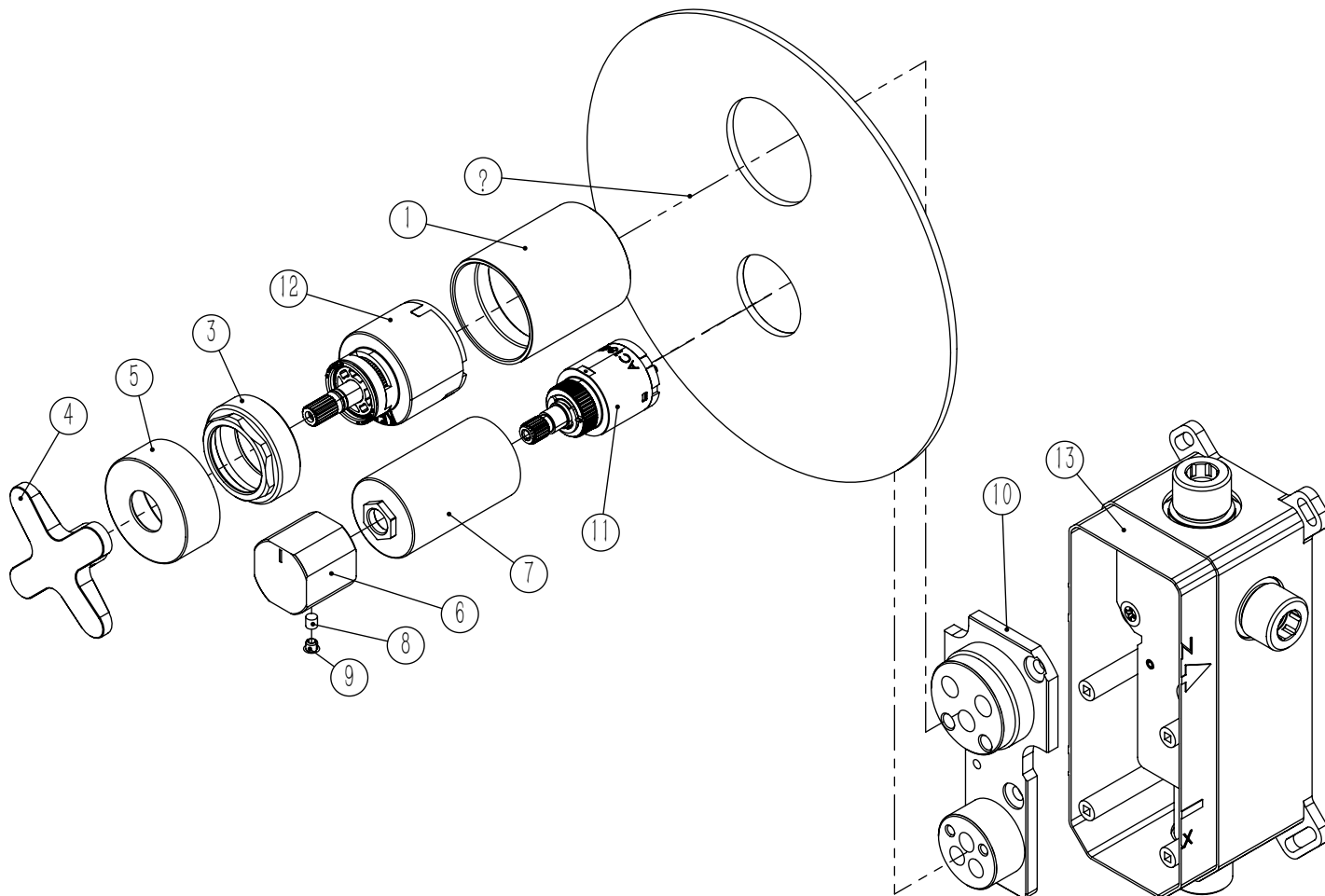
MONOCOMANDO EMBUTIR
BANHO/DUCHE 2 VIAS CROSSLINE



ASM TAPS®

WATER SOUL

LISTA DE COMPONENTES

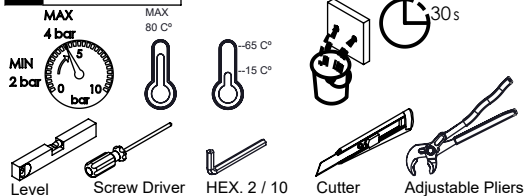


Rev. A 26/11/2025

CROSS080

Nº	DESCRIPTION	REF.	QT.
1	Copo Cartuchos Embutidos	100040	1
2	Espelho 2 Vias Cilíndrico	100061	1
3	Porca Campanula Cartuxo Cruzeta	100949	1
4	MANÍPULO CROSSLINE	AC2360	1
5	Porca Campanula Cartucho Progressivo	100860	1
6	Manipulo Distribuidor 080	101083	1
7	Campânula Distribuidor 080	101082	1
8	Perno Umbrako Din 916 M4-5 Inox A-2	09140400050IN	1
9	Dístico em ABS de 5.5mm Cromado	LH-PLCR4	1
10	BLOCO DA BOX EXTERIOR 2 VIAS	101346	1
11	Distribuidor Ø25 2 Vias	AC1840	1
12	Cartucho 35 Progressivo	AC1340	1
13	BOX MONOCOMANDO EMBUTIR DUCHE 2 VIAS	INT105	1

! SERVICE



CROSS080

MONOCOMANDO EMBUTIR
BANHO/DUCHE 2 VIAS CROSSLINE

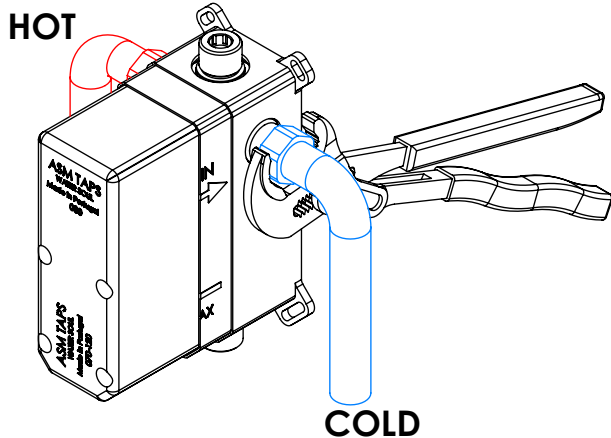


A S M T A P S[®]

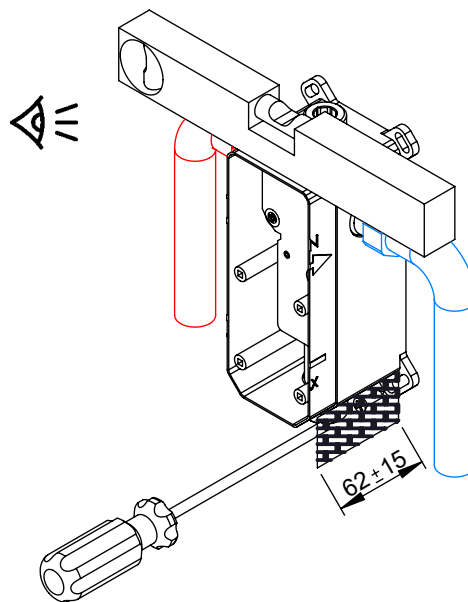
W A T E R S O U L

INSTALLATION MANUAL

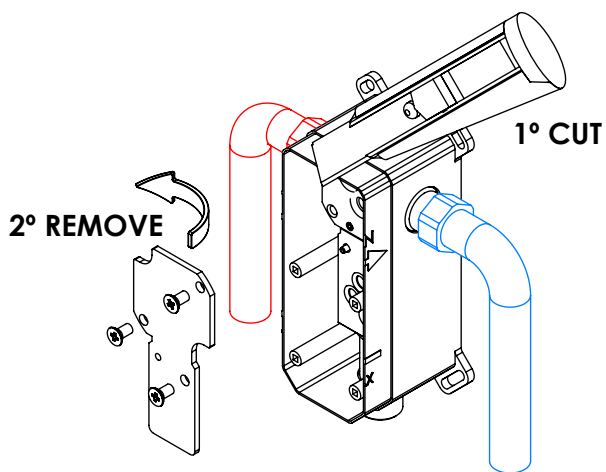
1 CONECTION



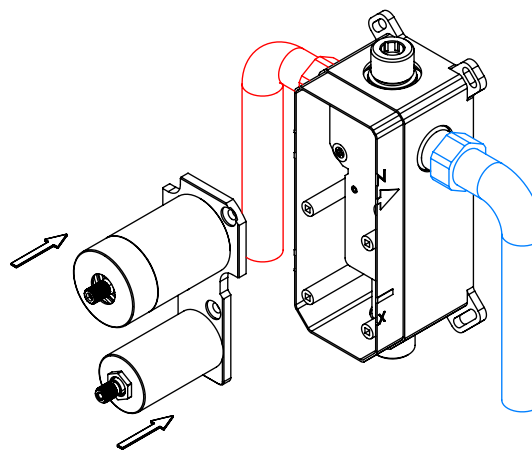
2 FIXED



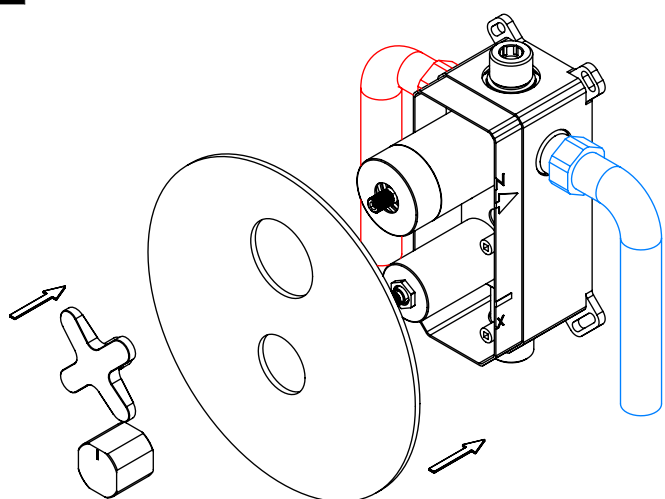
3 REMOVE PROTECTION



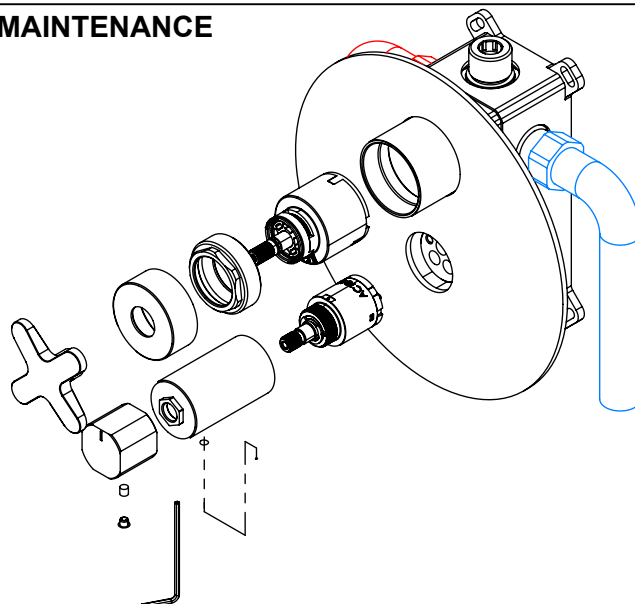
4 INSERT



5 FIX IT



6 MAINTENANCE



Rev. A 26/11/2025

CROSS080