

# CROSS090C1

MONOCOMANDO EMBUTIR 2/3 VIAS C/  
CHUVEIRO MÃO CROSSLINE



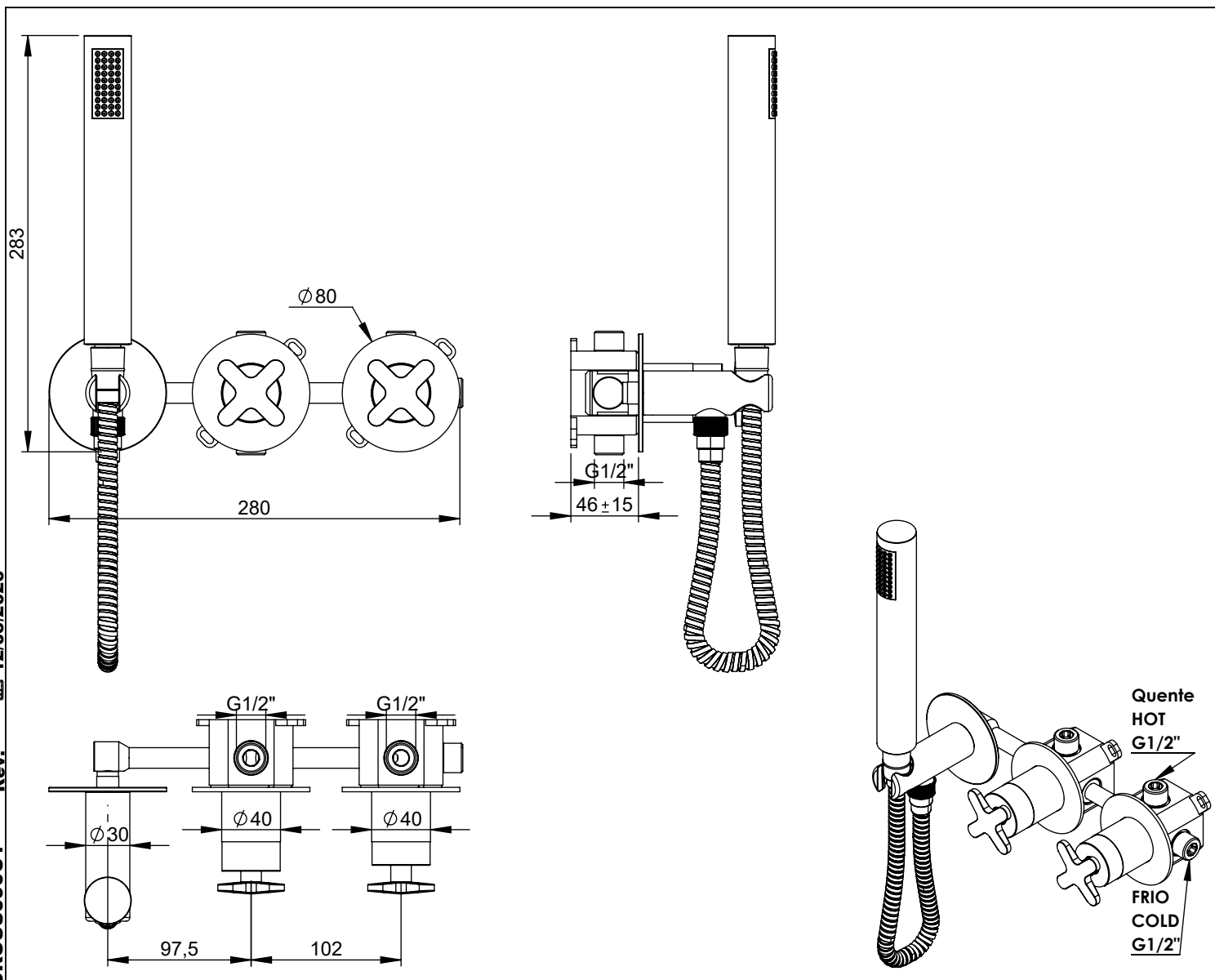
ASM TAPS®

WATER SOUL

**EN** CONCEALED 2/3 WAY MIXER WITH SET  
HAND SHOWER CROSSLINE

**FR** MITIGEUR ENCASTRÉE 2/3 VOIES KIT  
DOUCHETTE À MAIN CROSSLINE

**ES** MONOMANDO EMPOTRAR 2/3 VIAS SET DE  
DUCHA MANO CROSSLINE



CROSS090C1 Rev. 12/05/2026

## CARACTERÍSTICAS TÉCNICAS

**PRESSÃO RECOMENDADA:**  
RECOMMENDED PRESSURE: 3 - 4 BAR

**TEMPERATURA RECOMENDADA:**  
RECOMMENDED TEMPERATURE: 15°C - 65°C

**MATERIAIS:**  
MATERIALS: Latão

**TEMPERATURA MÁXIMA:**  
MAXIMUM TEMPERATURE: 70°C

**CAUDAL MÁXIMO A 3 BAR:**  
MAXIMUM FLOW AT 3 BAR: L/MIN

**LIGAÇÃO DE ENTRADA:**  
INPUT CONNECTION: G1/2"

**LIGAÇÃO DE SAÍDA:**  
OUTPUT CONNECTION: G1/2"

**PESO (KG):**  
WEIGHT (KG): 3,85

**DIMENSÕES EMBALAGEM (MM):**  
SIZE PACKAGING (MM): 285x200x170

## ACABAMENTOS

CR - CROMADO | CHROME | CHROME | CROMO

PR - PRETO MATE | BLACK MATT | NOIR MAT | NEGRO MATE

BR - BRANCO MATE | WHITE MATT | BLANC MAT | BLANCO MATE

ST - SATINOX | SATINOX | SATINOX | SATINOX

AT - ANTRACITE | ANTHRACITE | ANTHRACITE | ANTRACITA

GM - GUNMETAL | GUNMETAL | GUNMETAL | GUNMETAL

GMM - GUNMETAL MATE | GUNMETAL MATT | GUNMETAL MAT | GUNMETAL MATE

OR - DOURADO | GOLD | DORÉ | DORADO

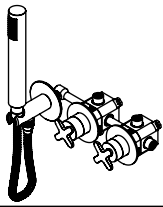
ORM - DOURADO MATE | GOLD MATT | DORÉ MAT | DORADO MATE

CB - COBRE | COPPER | CUIVRE | COBRE

CBM - COBRE MAT | COPPER MAT | CUIVRE MAT | COBRE MATE

## TECNOLOGIA

- AC560 - DISTRIBUIDOR 3/4 VIAS  
AC560 - 3/4 WAY DISTRIBUTOR
- AC1340 - Cartucho Progressivo C/ Estria  
AC1340 - Ø35 Progressive Cartridge
- Abertura energia saving  
Opening energy saving
- Chuveiro de mão cilíndrico  
Cylindrical hand shower
- Ligação banheira/duche 1,70mt Cromo  
Bath/shower connection 1.70 mt Cromo
- Embutido a parede  
Built-in to wall



# CROSS090C1

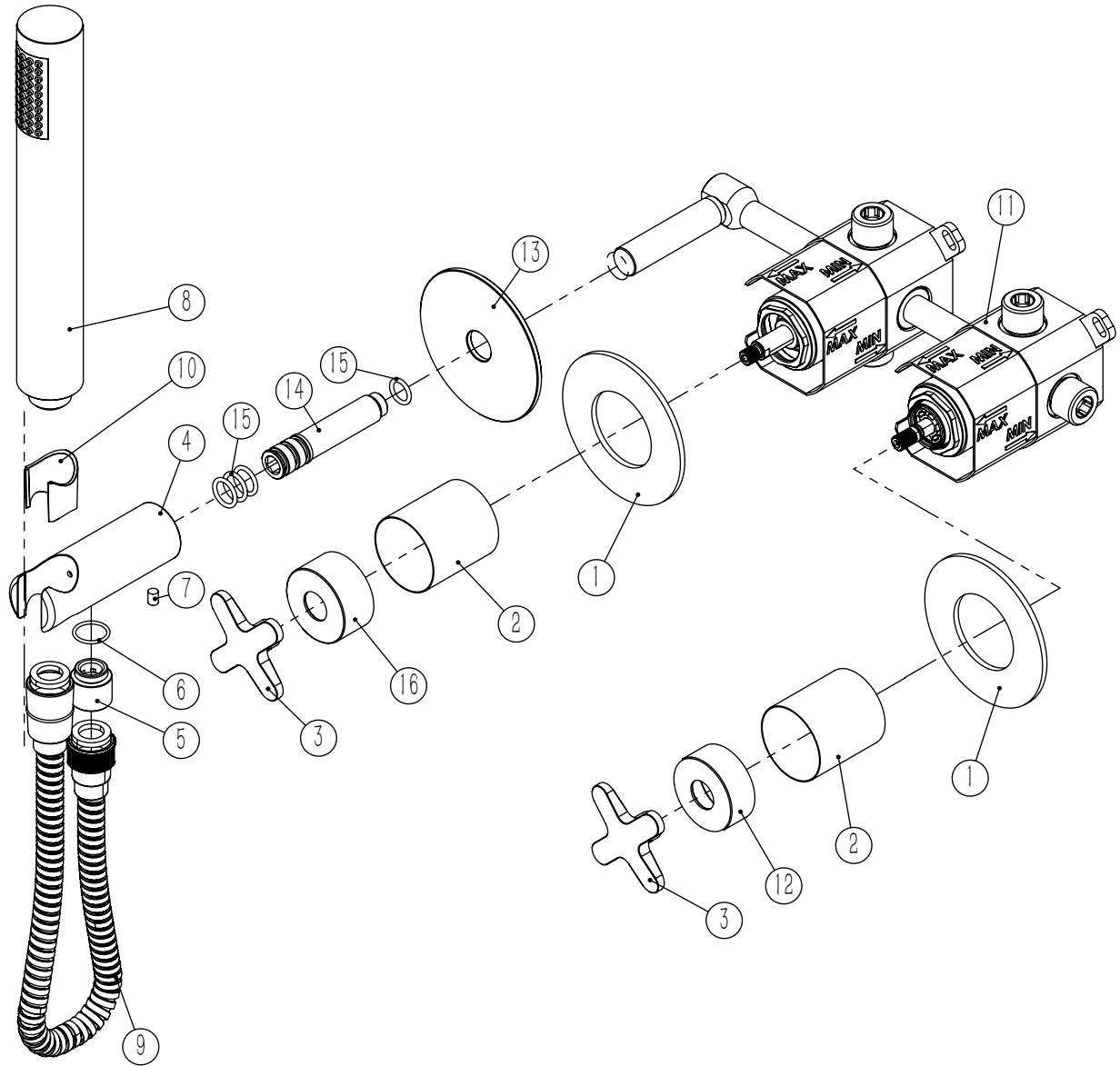
MONOCOMANDO EMBUTIR 2/3 VIAS  
C/ CHUVEIRO MÃO CROSSLINE



ASM TAPS®

WATER SOUL

## LISTA DE COMPONENTES



CROSS090C1 Rev. 12/05/2026

Nº	DESCRIPTION	REF.	QT.
1	ESPELHO 1 VIA CILÍNDRICO	100274	2
2	COPO EXTERIOR EMBUTIDOS CRUZETA	101568	2
3	MANÍPULO CROSSLINE	AC2360	2
4	Tomada Água Cilíndrica	100117	1
5	Casquilho P_Base Chuveiro	100052	1
6	Orings 13.00x1.50 NBR 70	001078	1
7	Perno Umbrako Din 914 M5-8 Inox A-2	09140500080IN	1
8	Chuveiro Cilíndrico	AC391	1
9	LIGAÇÃO CHUVEIRO 1.75 MT CROMO	AC800A	1
10	PROTEÇÃO INTERIOR CHUVEIRO TOMADA DE ÁGUA	AC2040	1
11	BOX MONOCOMANDO EMBUTIR 2/3 VIAS PROGRESSIVO C/ CHUVEIRO MÃO	INT132	1
12	Porca Campanula Cartucho Progressivo	100860	1
13	PATER BICA PAREDE CILÍNDRICA	101425	1
14	PONTEIRA BICA PAREDE SLIMASM	100038	1
15	Orings 10.00x2.00 NBR 70	001367	4
16	Porca Campanula Cartucho Distr. Cruzeta	100861	1

# SERVICE



# CROSS090C1

MONOCOMANDO EMBUTIR 2/3 VIAS  
C/ CHUVEIRO MÃO CROSSLINE

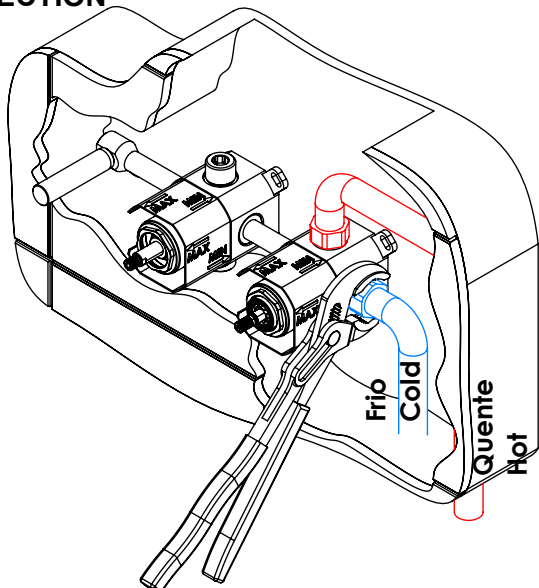


A S M T A P S

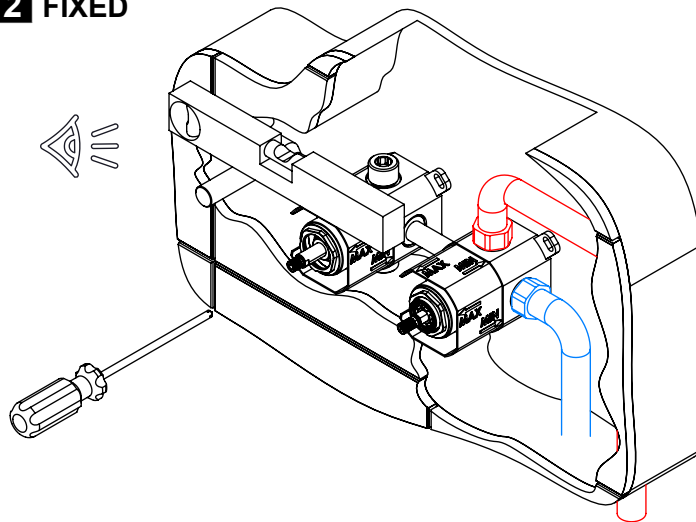
W A T E R S O U L

## INSTALLATION MANUAL

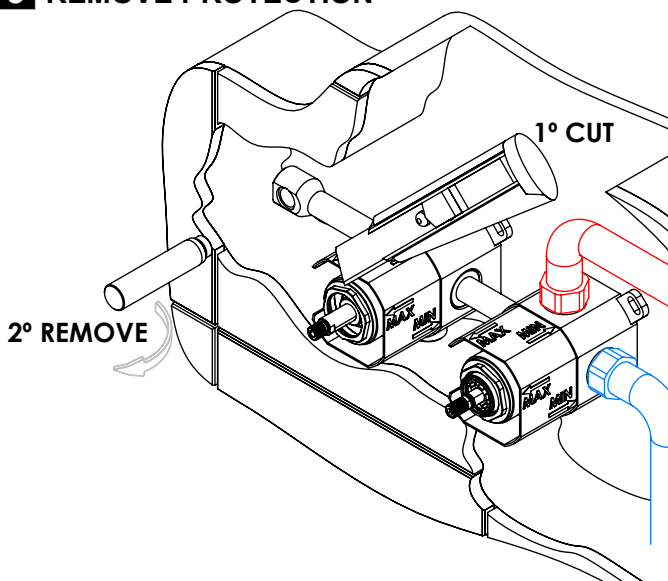
### 1 CONECTION



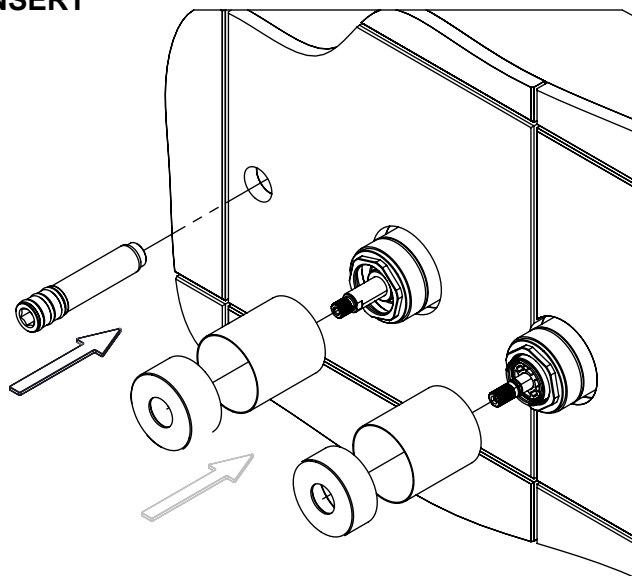
### 2 FIXED



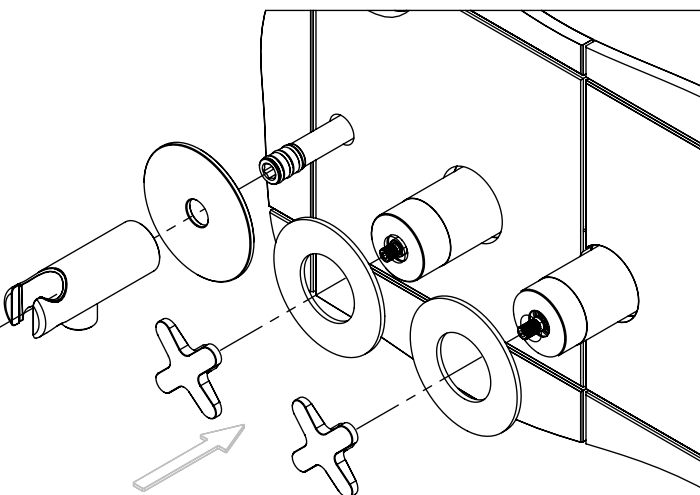
### 3 REMOVE PROTECTION



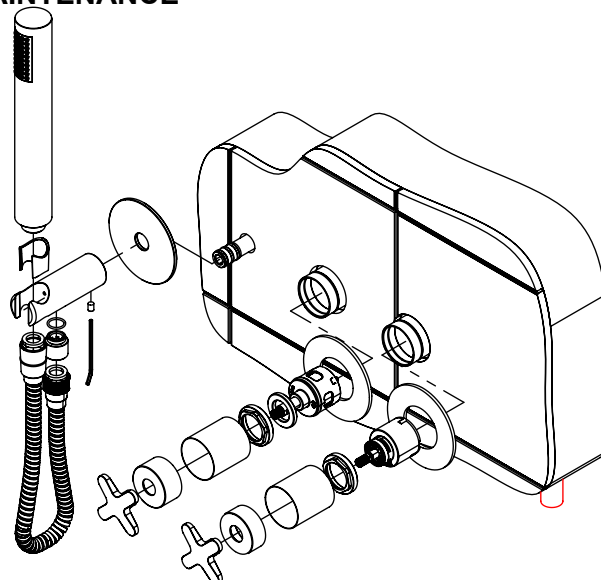
### 4 INSERT



### 5 FIX IT



### 6 MAINTENANCE



CROSS090C1 Rev. 12/05/2026