



CZ090A

**MONOCOMANDO EMBUTIR 2/3 VIAS C/
CHUVEIRO MÃO CRUZETA**



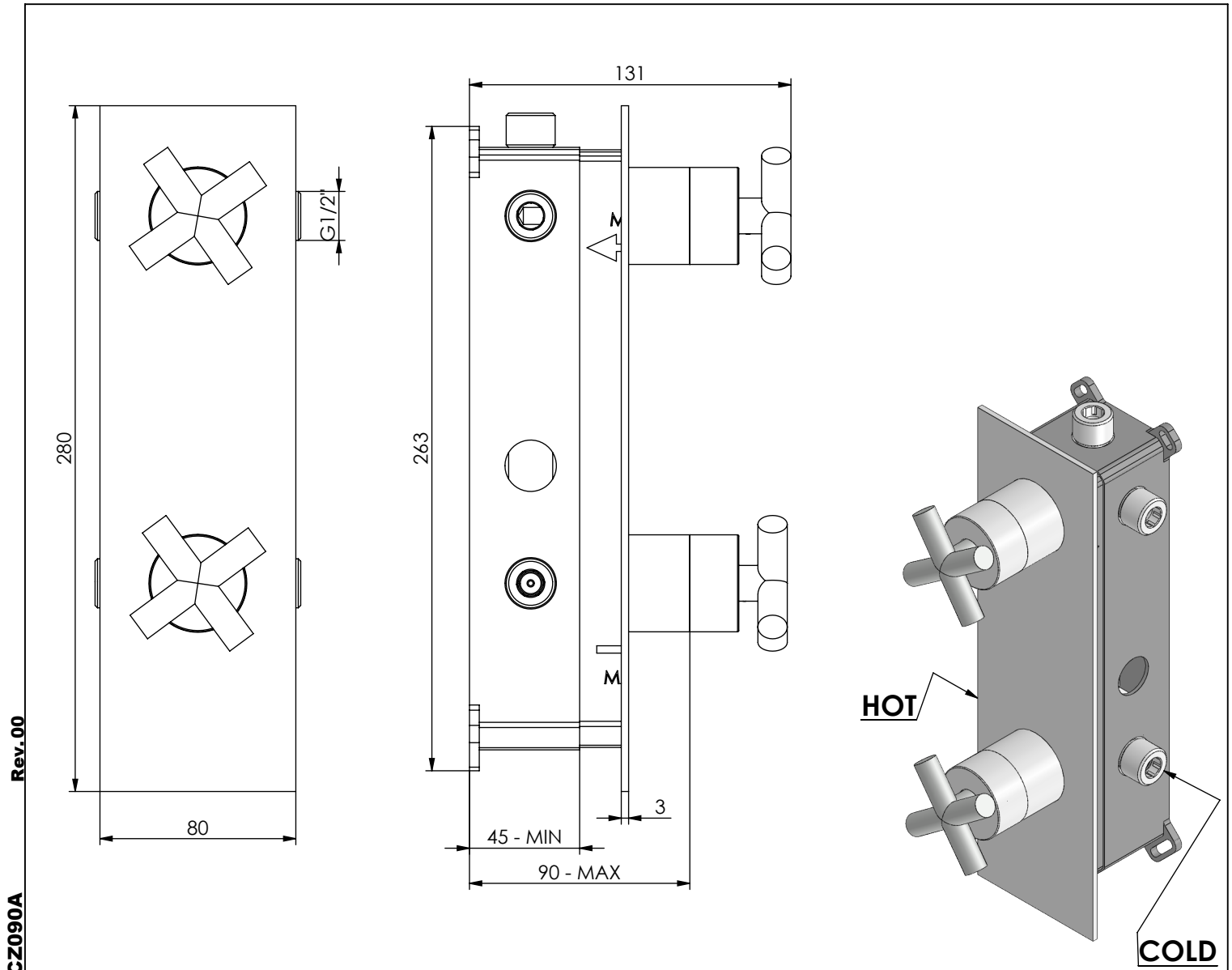
A S M T A P S

W A T E R S O U L

EN CONCEALED 2/3 WAY MIXER WITH SET Ø
HAND SHOWER CRUZETA

FR CONCEALED 2/3 WAY MIXER WITH SET Ø
HAND SHOWER CRUZETA

ES CONCEALED 2/3 WAY MIXER WITH SET Ø
HAND SHOWER CRUZETA



Rev.00
CZ090A




CARACTERÍSTICAS TÉCNICAS

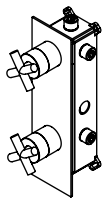
PRESSÃO RECOMENDADA: RECOMMENDED PRESSURE:	3 - 4 BAR
TEMPERATURA RECOMENDADA: RECOMMENDED TEMPERATURE:	15°C - 65°C
MATERIAIS: MATERIALS:	Latão
TEMPERATURA MÁXIMA: MAXIMUM TEMPERATURE:	70°C
CAUDAL MÁXIMO A 3 BAR: MAXIMUM FLOW AT 3 BAR:	L/MIN
LIGAÇÃO DE ENTRADA: INPUT CONNECTION:	G1/2"
LIGAÇÃO DE SAÍDA: OUTPUT CONNECTION:	G1/2"
PESO (KG): WEIGHT (KG):	2,01
DIMENSÕES EMBALAGEM (MM): SIZE PACKAGING (MM):	285x200x170

ACABAMENTOS

CR - CROMADO CHROME CHROME CROMO
PR - PRETO MATE BLACK MATT NOIR MAT NEGRO MATE
BR - BRANCO MATE WHITE MATT BLANC MAT BLANCO MATE
ST - SATINOX SATINOX SATINOX SATINOX
AT - ANTRACITE ANTHRACITE ANTHRACITE ANTRACITA
GM - GUNMETAL GUNMETAL GUNMETAL GUNMETAL
GMM - GUNMETAL MATE GUNMETAL MATT GUNMETAL MAT GUNMETAL MATE
OR - DOURADO GOLD DORÉ DORADO
ORM - DOURADO MATE GOLD MATT DORÉ MAT DORADO MATE
CB - COBRE COPPER CUIVRE COBRE
CBM - COBRE MAT COPPER MAT CUIVRE MAT COBRE MATE

TECNOLOGIA

-  AC560 - DISTRIBUIDOR 3/4 VIAS
AC560 - 3/4 WAY DISTRIBUTOR
-  AC1340 - Cartucho Ø35
AC1340 - Cartridge Ø35
-  Embutido a parede
Built-in to wall



CZ090A

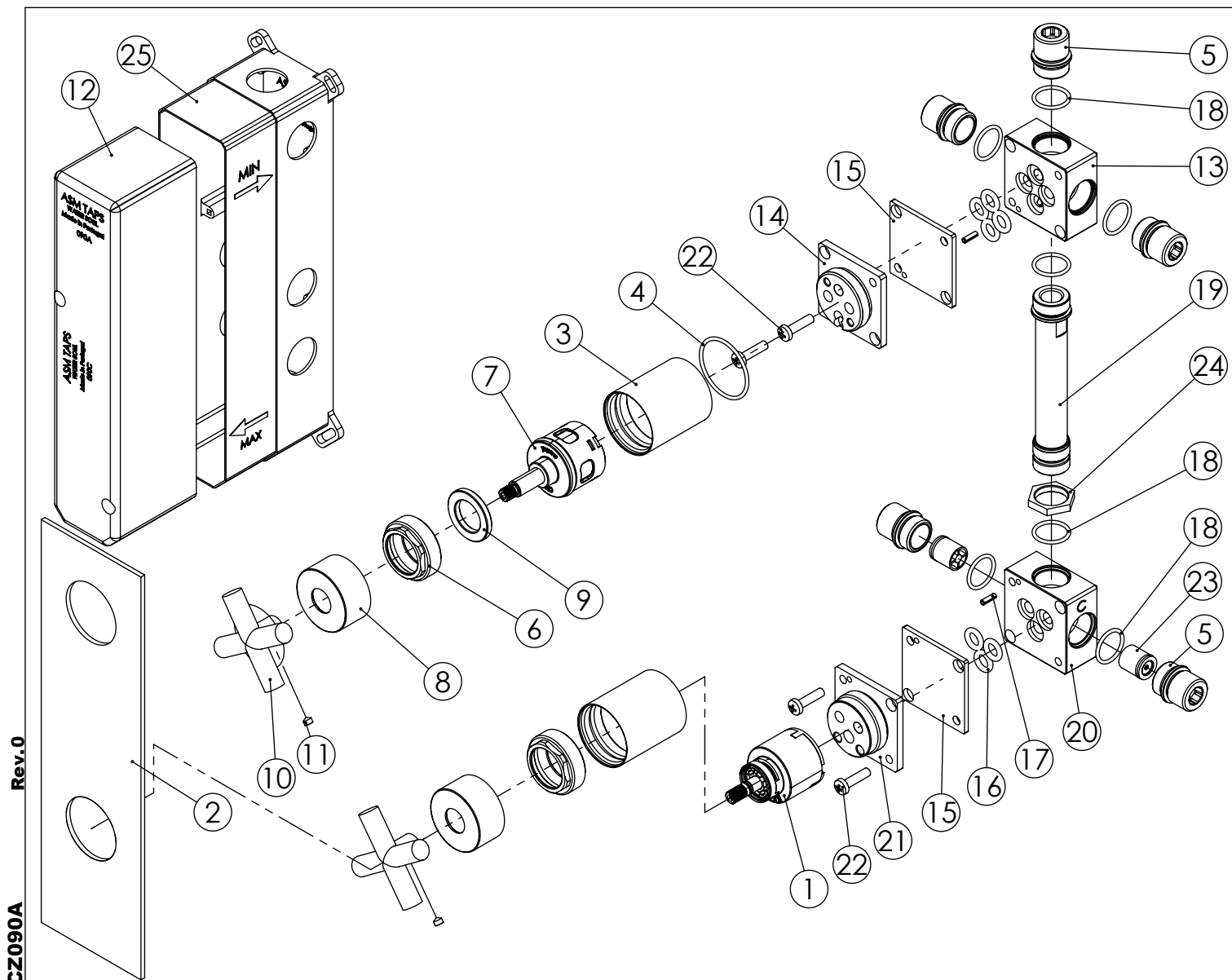
MONOCOMANDO EMBUTIR 2/3 VIAS
C/ CHUVEIRO MÃO CRUZETA



ASM TAPS®

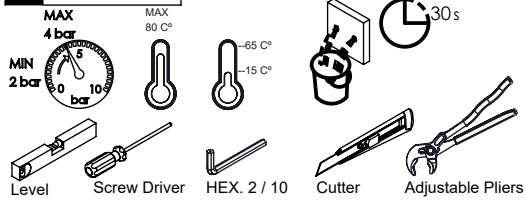
WATER SOUL

LISTA DE COMPONENTES



Nº	DESCRIPTION	REF.	QT.
1	Cartucho 35 Progressivo	AC1340	1
2	Espelho 090A Completo	100703	1
3	Copo Cartuchos Embutidos	100040	2
4	Orings 32.00x2.00 NBR 70	001411	1
5	CASQUILHO G1-2 G1-2 BOX	101183	5
6	Porca Campanula Cartuxo Cruzeta	100949	2
7	Distribuidor Ø35 4 Vias	AC560	1
8	Porca Campanula Cartuxo Distr. Cruzeta	100861	2
9	Aumento Porca Cartucho Distribuidor	100891	1
10	Manipulo Cruzeta	AC1300	2
11	Perno Umbrako Din 914 M5-4 Inox A-2	09160500040IN	2
12	Tampa Box 02	101091	1
13	BLOCO DISTRIBUIDOR DA BOX INTERIOR	101350	1
14	BLOCO DISTRIBUIDOR DA BOX EXTERIOR	101351	1
15	TAMPA PROTEÇÃO BLOCO EMBUTIDOS	101340	2
16	Orings 8.00x3.00 NBR 70	001883	7
17	CAVILHA ELÁSTICA DIN 1481 Ø 3X10 INOX A-2	14810300100IN	2
18	ORINGS 18.00x2.00 NBR 70	001383	7
19	LIGAÇÃO CARTUCHO DISTRIBUIDOR 090A	101383	1
20	BLOCO LAVATÓRIO DA BOX INTERIOR	101348	1
21	BLOCO LAVATÓRIO DA BOX EXTERIOR	101349	1
22	Paraf. Din 7985 PH M 5x20 - IN	798520500200I N	4
23	Válvula Anti retorno Ø15	AC1092	2
24	PORCA G1-2 SEXT. ESP 4,5	101347	1
25	Base Box 02	101090	1

! SERVICE



CZ090A

MONOCOMANDO EMBUTIR 2/3 VIAS C/ CHUVEIRO MÃO CRUZETA

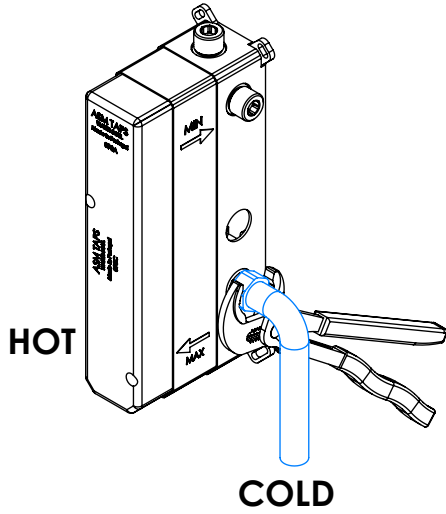


A S M T A P S ®

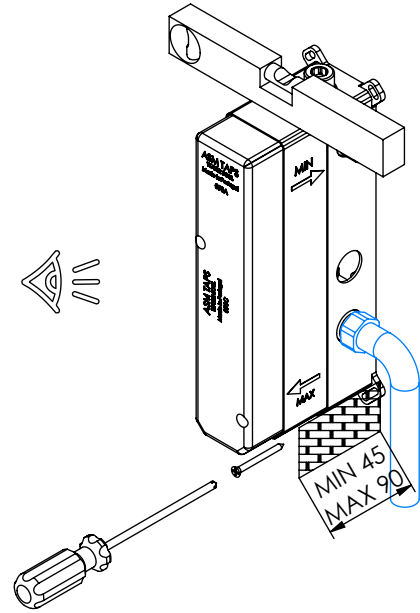
W A T E R S O U L

INSTALLATION MANUAL

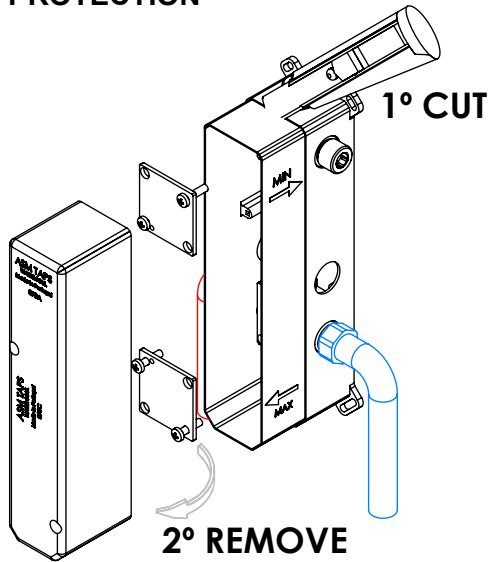
1 CONECTION



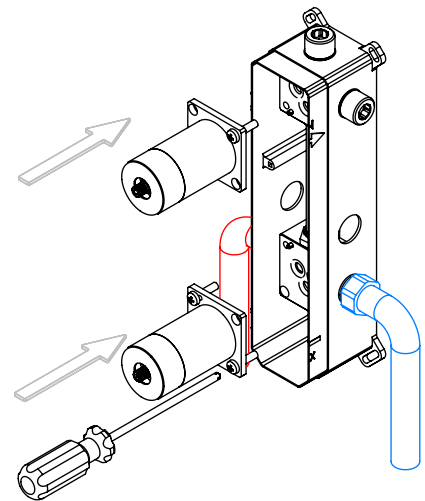
2 FIXED



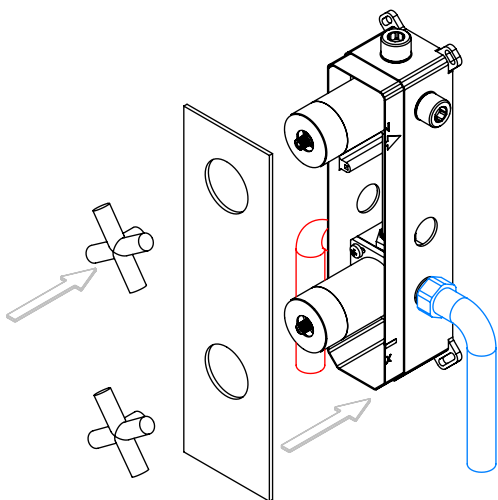
3 REMOVE PROTECTION



4 FIX IT



5 FIX IT



6 MAINTENANCE

