



# DIAM010

## Monocomando Lavatório DIAMOND



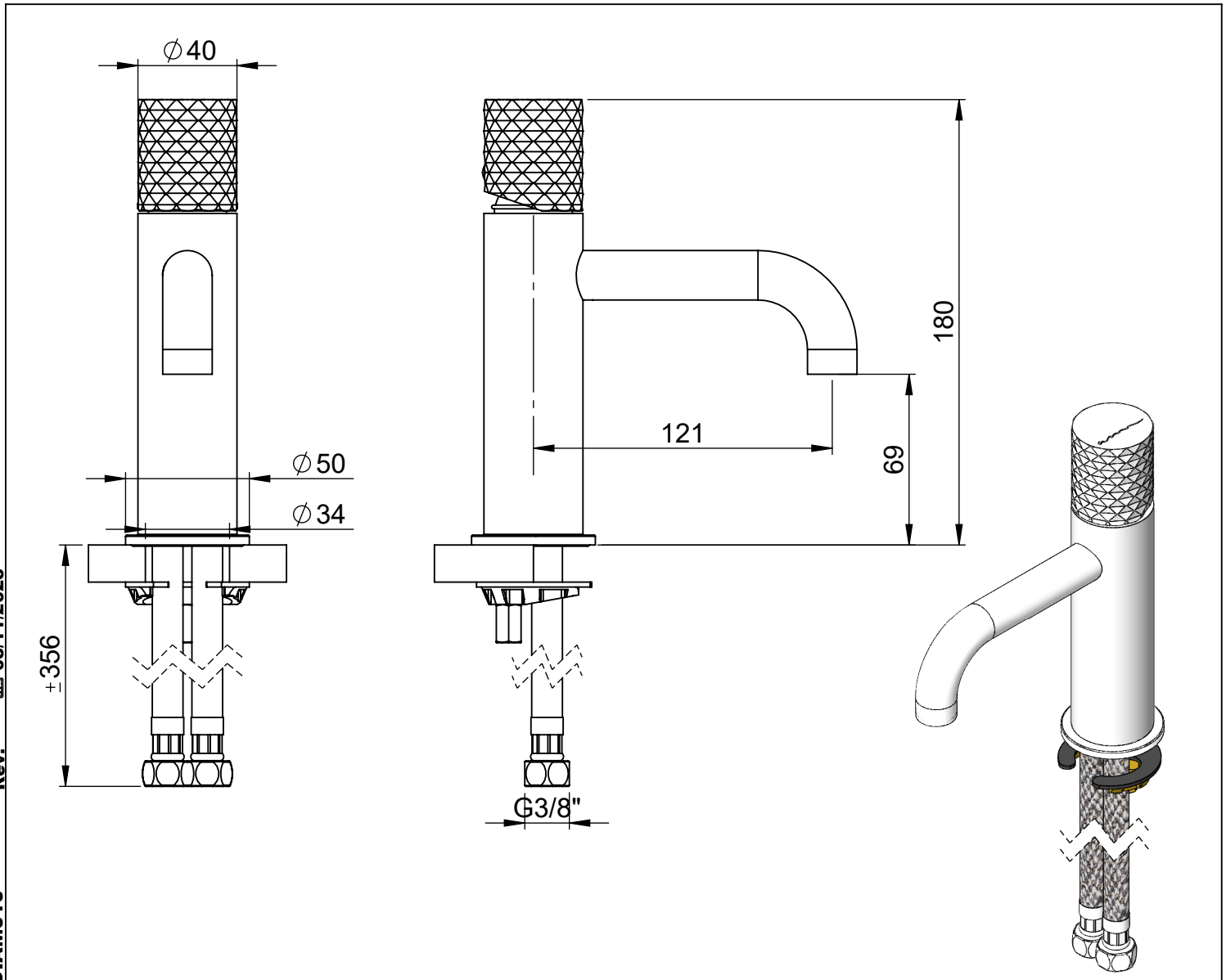
**A S M T A P S**®

W A T E R S O U L

**EN** WASHBASIN MIXER DIAMOND

**FR** MITIGEUR LAVABO DIAMOND

**ES** MONOMANDO LAVABO DIAMOND



Rev. 03/11/2025

DIAM010

### CARACTERÍSTICAS TÉCNICAS

PRESSÃO RECOMENDADA:  
RECOMMENDED PRESSURE: 3 - 4 BAR

TEMPERATURA RECOMENDADA:  
RECOMMENDED TEMPERATURE: 15°C - 65°C

MATERIAIS:  
MATERIALS: Latão

TEMPERATURA MÁXIMA:  
MAXIMUM TEMPERATURE: 70°C

CAUDAL MÁXIMO A 3 BAR:  
MAXIMUM FLOW AT 3 BAR: 5L/MIN

LIGAÇÃO DE ENTRADA:  
INPUT CONNECTION: G3/8"

LIGAÇÃO DE SÉIDA:  
OUTPUT CONNECTION: -

PESO (KG):  
WEIGHT (KG): -

DIMENSÕES EMBALAGEM (MM):  
SIZE PACKAGING (MM): 274x162x102

### ACABAMENTOS

CR - CROMADO | CHROME | CHROME | CROMO

PR - PRETO MATE | BLACK MATT | NOIR MAT | NEGRO MATE

BR - BRANCO MATE | WHITE MATT | BLANC MAT | BLANCO MATE

ST - SATINOX | SATINOX | SATINOX | SATINOX

AT - ANTRACITE | ANTHRACITE | ANTHRACITE | ANTRACITA

GM - GUNMETAL | GUNMETAL | GUNMETAL | GUNMETAL

GMM - GUNMETAL MATE | GUNMETAL MATT | GUNMETAL MAT | GUNMETAL MATE


OR - DOURADO | GOLD | DORÉ | DORADO


ORM - DOURADO MATE | GOLD MATT | DORÉ MAT | DORADO MATE

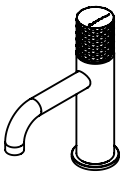
CB - COBRE | COPPER | CUIVRE | COBRE

CBM - COBRE MAT | COPPER MAT | CUIVRE MAT | COBRE MATE

### TECNOLOGIA

 AC2280 - Cartucho Ø25 Energy Saving  
AC2280 - Ø25 Energy Saving Cartridge

 Abertura energia saving  
Opening energy saving



# DIAM010

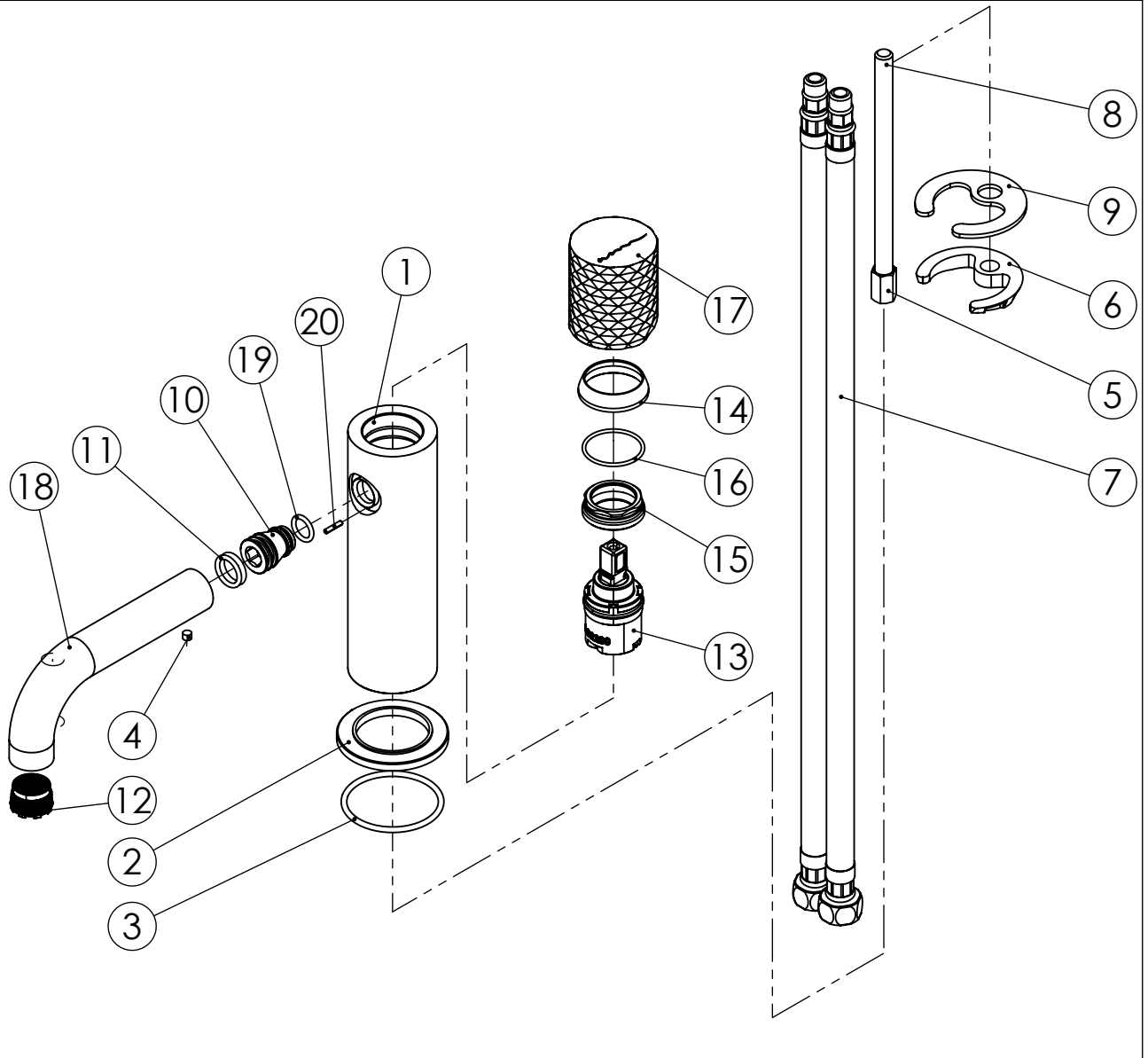
## Monocomando Lavatório DIAMOND



ASM TAPS®

WATER SOUL

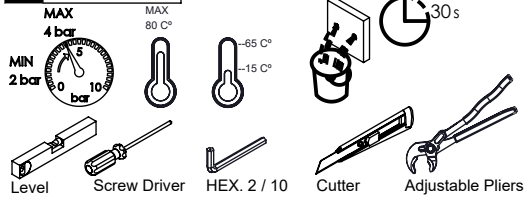
### LISTA DE COMPONENTES



DIAM010 Rev. 03/11/2025

Nº	DESCRIPTION	REF.	QT.
1	CORPO LAVATÓRIO CILINDRICA	100072	1
2	Pater Lavatório Cilíndrico	100016	1
3	Orings 41.00x2.50 NBR 70	001783	1
4	Perno Umbrako Din 914 M4-4 Inox A-2	09140400040IN	1
5	Fêmea Fixação M8	101071	1
6	Ferradura	AC844	1
7	Ligação 450mm M10x1 G3/8"	AC844	2
8	Perno Fixação P_Monoc. 120mm	AC844	1
9	Vedação Da Ferradura	AC844	1
10	ÊMBOLO BICA LAVATÓRIO DIAMOND	101537	1
11	Orings 10.00x2.00 NBR 70	001367	2
12	PERLATOR 18,5x1 EMBUTIR 5LT.MIN	AC2290	1
13	CARTUCHO Ø 26 JUNTA SUPERIOR COLD OPEN	AC2280	1
14	Campânula Porca M32x1,5	100883	1
15	Porca M28x1 C_Oring	100892	1
16	Orings 20.00x1.50 NBR 70	021305	1
17	MANÍPULO LAVATÓRIO DIAMOND	AC2370	1
18	Bica Lavatório Diamond	101452	1
19	Orings 8.00x1.90 NBR 70	001349	1
20	CAVILHA ELÁSTICA DIN 1481 Ø 2X10 INOX A-2	14810200100IN	1

# ! SERVICE

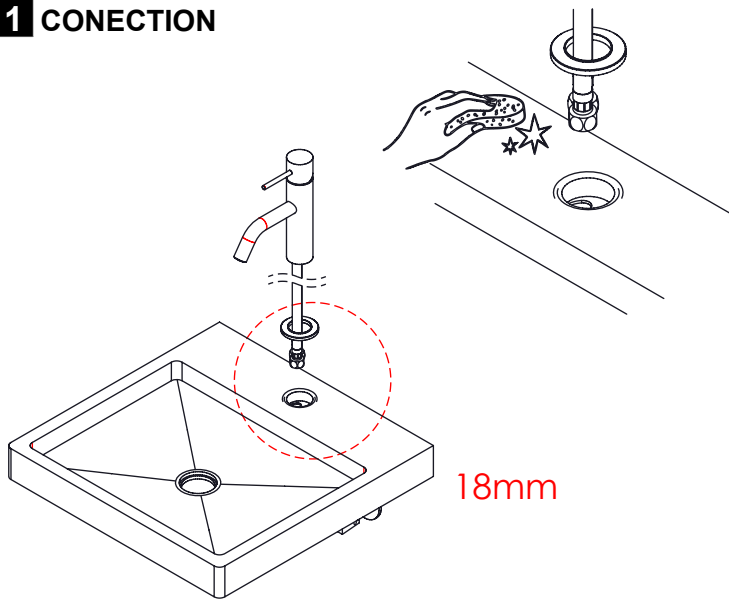


A S M T A P S ®

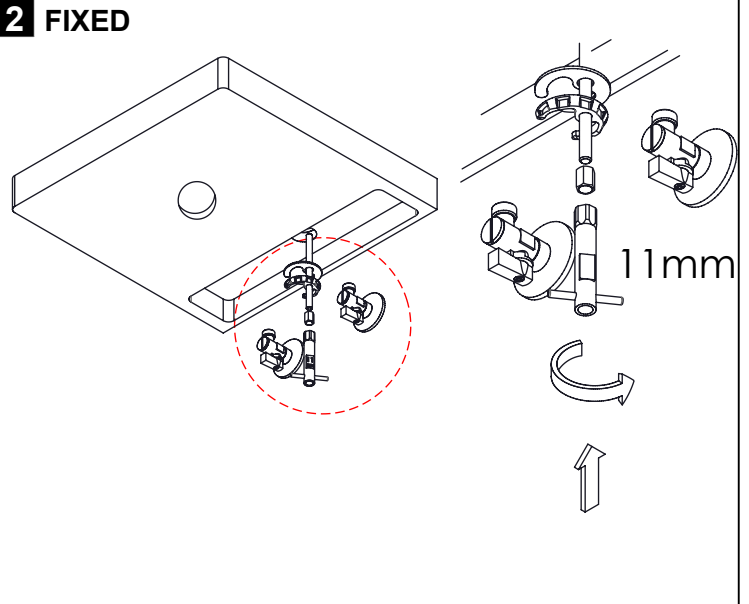
W A T E R S O U L

## INSTALLATION MANUAL

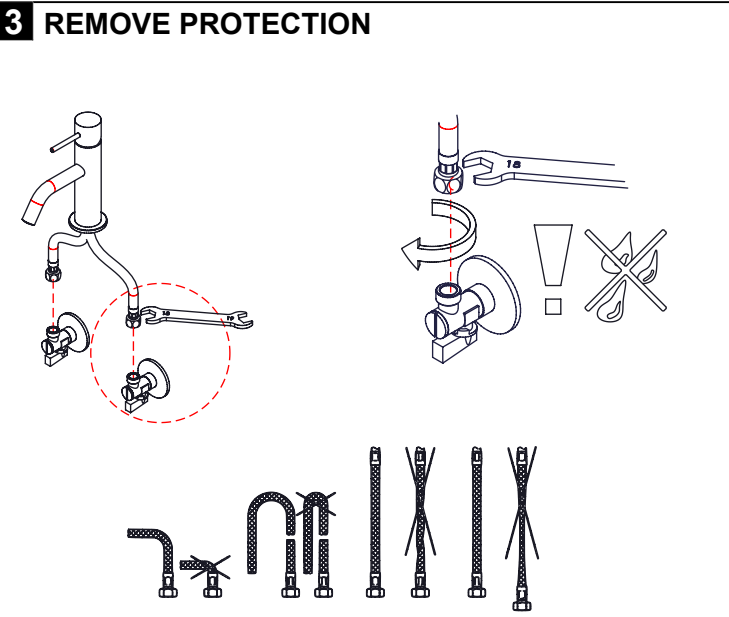
### 1 CONECTION



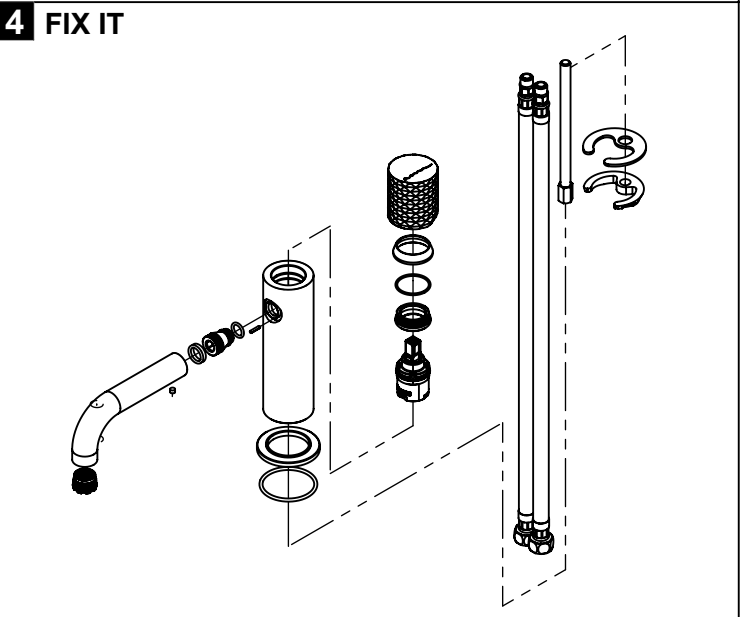
### 2 FIXED



### 3 REMOVE PROTECTION



### 4 FIX IT



### 5 FIX IT

### 6 MAINTENANCE

Rev. 03/11/2025