



# SPIRAL050

Monocomando Lavatório Alto SPIRAL



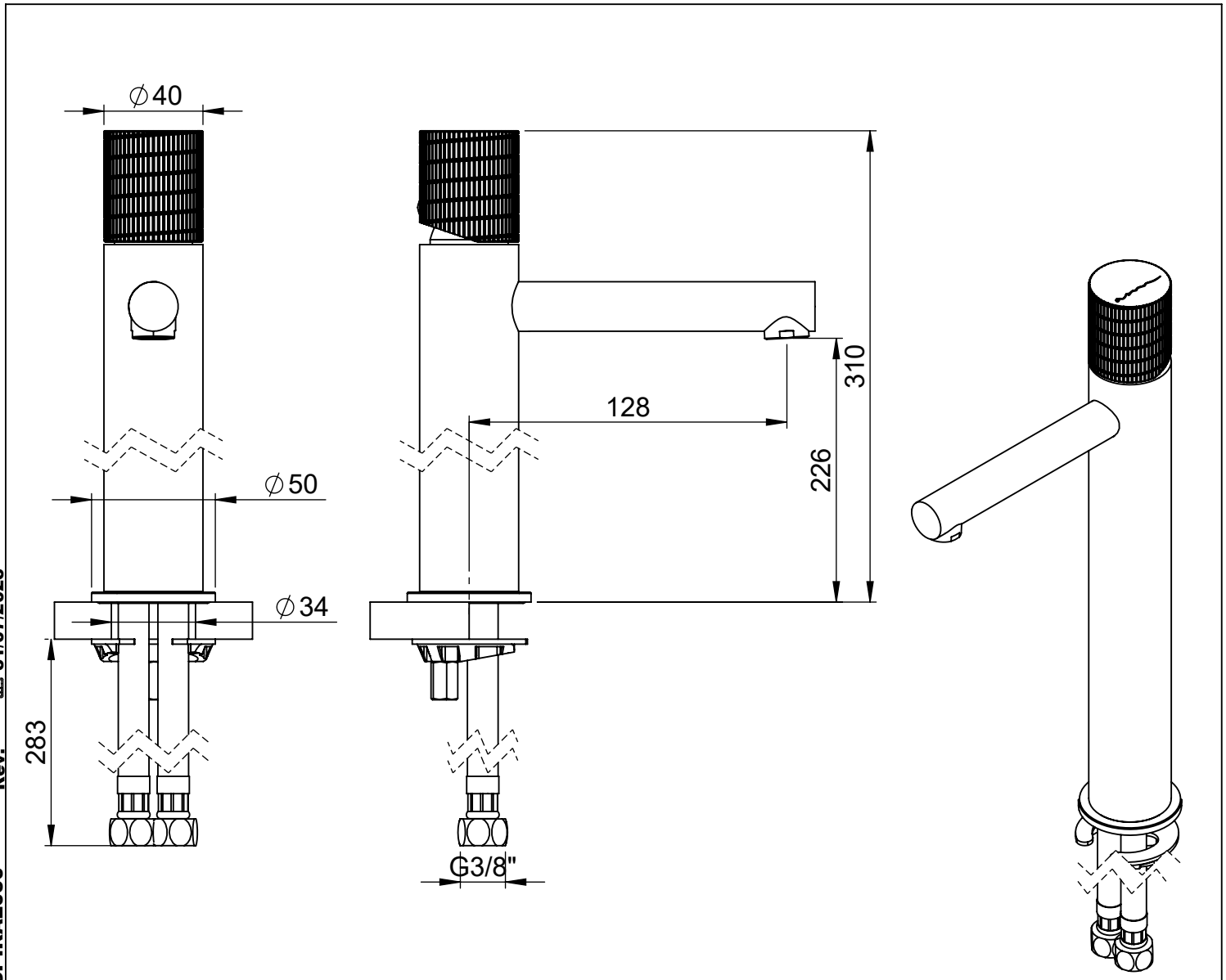
**A S M T A P S**®

W A T E R S O U L

**EN** WASHBASIN HIGH MIXER SPIRAL

**FR** MITIGEUR LAVABO HAUT SPIRAL

**ES** MONOMANDO LAVABO ALTO SPIRAL



Rev. 31/07/2025 SPIRAL050





## CARACTERÍSTICAS TÉCNICAS

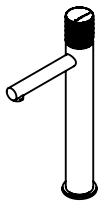
PRESSÃO RECOMENDADA: RECOMMENDED PRESSURE:	3 - 4 BAR
TEMPERATURA RECOMENDADA: RECOMMENDED TEMPERATURE:	15°C - 65°C
MATERIAIS: MATERIALS:	Latão
TEMPERATURA MÁXIMA: MAXIMUM TEMPERATURE:	70°C
CAUDAL MÁXIMO A 3 BAR: MAXIMUM FLOW AT 3 BAR:	5L/MIN
LIGAÇÃO DE ENTRADA: INPUT CONNECTION:	G3/8"
LIGAÇÃO DE SÉIDA: OUTPUT CONNECTION:	-
PESO (KG): WEIGHT (KG):	-
DIMENSÕES EMBALAGEM (MM): SIZE PACKAGING (MM):	274x162x102

## ACABAMENTOS

CR - CROMADO   CHROME   CHROME   CROMO
PR - PRETO MATE   BLACK MATT   NOIR MAT   NEGRO MATE
BR - BRANCO MATE   WHITE MATT   BLANC MAT   BLANCO MATE
ST - SATINOX   SATINOX   SATINOX   SATINOX
AT - ANTRACITE   ANTHRACITE   ANTHRACITE   ANTRACITA
GM - GUNMETAL   GUNMETAL   GUNMETAL   GUNMETAL
GMM - GUNMETAL MATE   GUNMETAL MATT   GUNMETAL MAT   GUNMETAL MATE
OR - DOURADO   GOLD   DORÉ   DORADO
ORM - DOURADO MATE   GOLD MATT   DORÉ MAT   DORADO MATE
CB - COBRE   COPPER   CUIVRE   COBRE
CBM - COBRE MAT   COPPER MAT   CUIVRE MAT   COBRE MATE

## TECNOLOGIA

-  AC2280 - Cartucho Ø26 Energy Saving
-  AC2280 - Ø26 Energy Saving Cartridge
-  Abertura energia saving
-  Opening energy saving



# SPIRAL050

## Monocomando Lavatório Alto SPIRAL

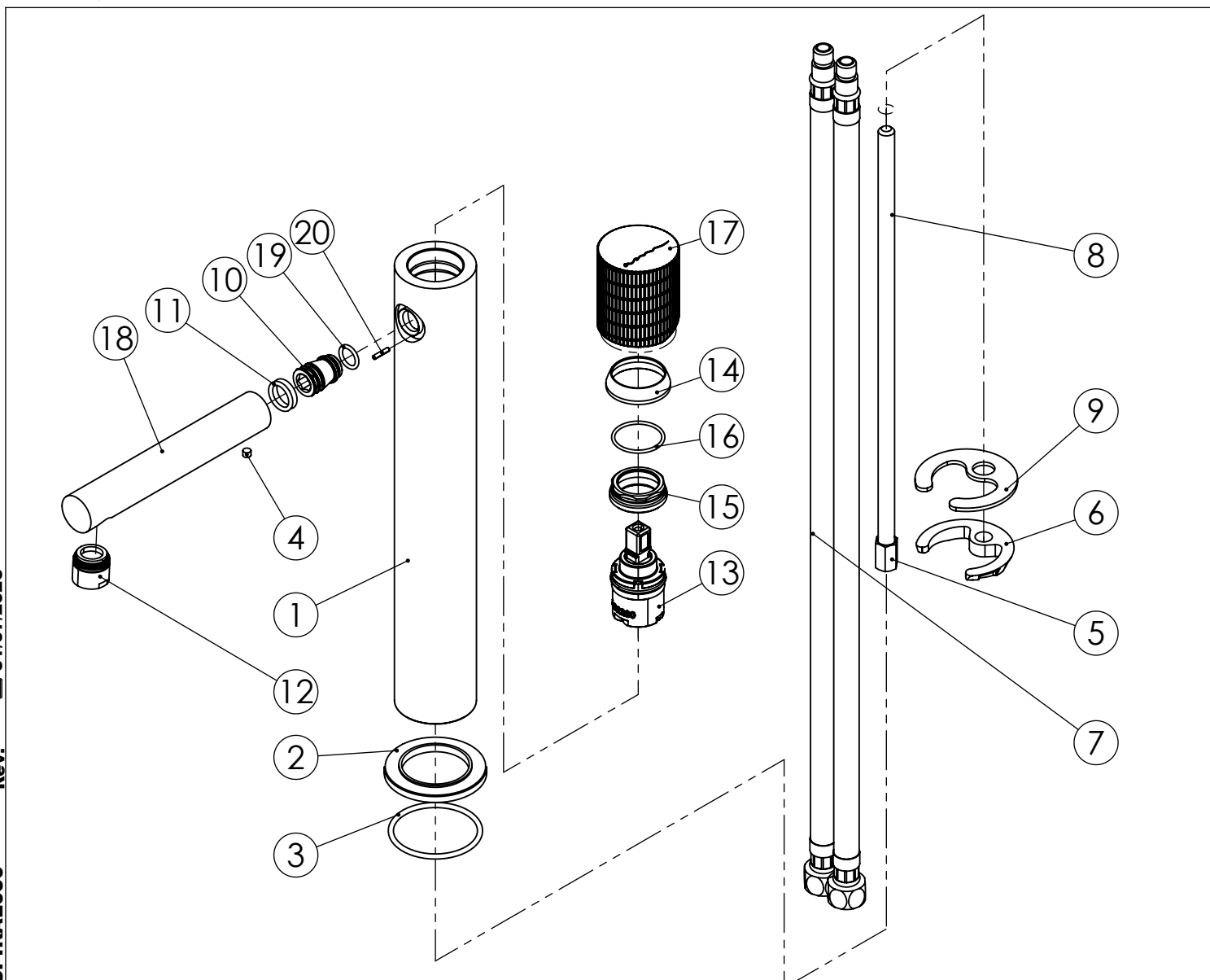


ASM TAPS®

WATER SOUL

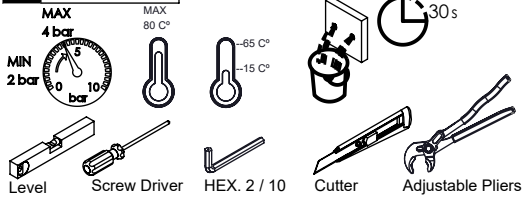
### LISTA DE COMPONENTES

SPIRAL050 Rev. 31/07/2025



Nº	DESCRIPTION	REF.	QT.
1	CORPO LAVATÓRIO CILINDRICA	10516	1
2	Pater Lavatório Cilíndrico	100016	1
3	Orings 41.00x2.50 NBR 70	001783	1
4	Perno Umbrako Din 914 M4-4 Inox A-2	09140400040IN	1
5	Fêmea Fixação M8	101071	1
6	Ferradura	AC844	1
7	Ligação 500mm M10x1 G3/8"	AC843	2
8	Perno Fixação P. Monoc. Alto	100258	1
9	Vedação Da Ferradura	AC844	1
10	ÊMBOLO BICA LAVATÓRIO SPIRAL	101392	1
11	Orings 10.00x2.00 NBR 70	001367	2
12	Perlator M18x1	AC1440	1
13	CARTUCHO Ø 26 JUNTA SUPERIOR COLD OPEN	AC2280	1
14	Campânula Porca M32x1,5	100883	1
15	Porca M28x1 C. Oring	100892	1
16	Orings 20.00x1.50 NBR 70	021305	1
17	MANÍPULO SPIRAL LAVATÓRIO	AC2200	1
18	BICA LAVATÓRIO CILINDRICA 120 MM	100073	1
19	Orings 7,94 x 1,78 NBR 70	021229	1
20	CAVILHA ELÁSTICA DIN 1481 Ø 2X10 INOX A-2	14810200100IN	1

# ! SERVICE

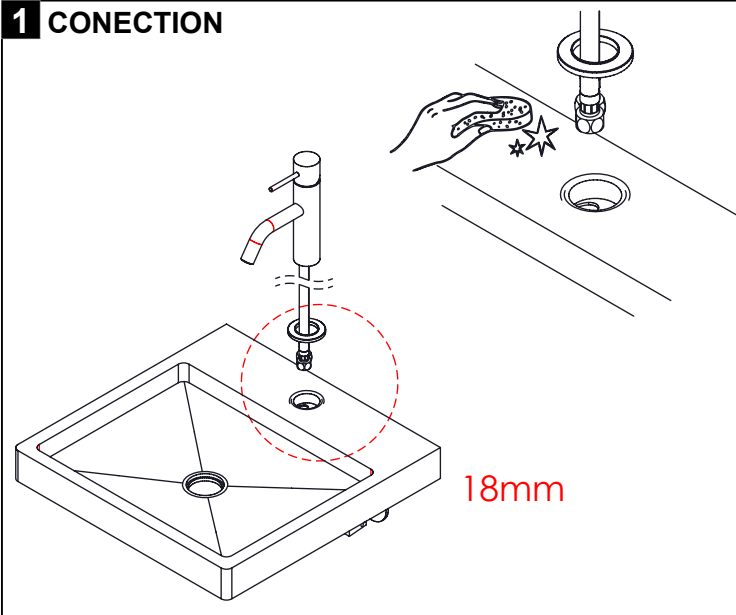


A S M T A P S ®

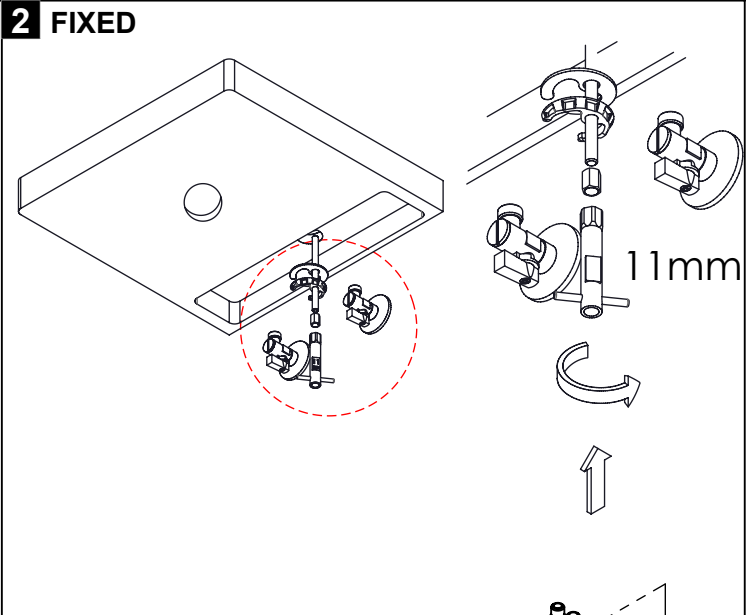
W A T E R S O U L

## INSTALLATION MANUAL

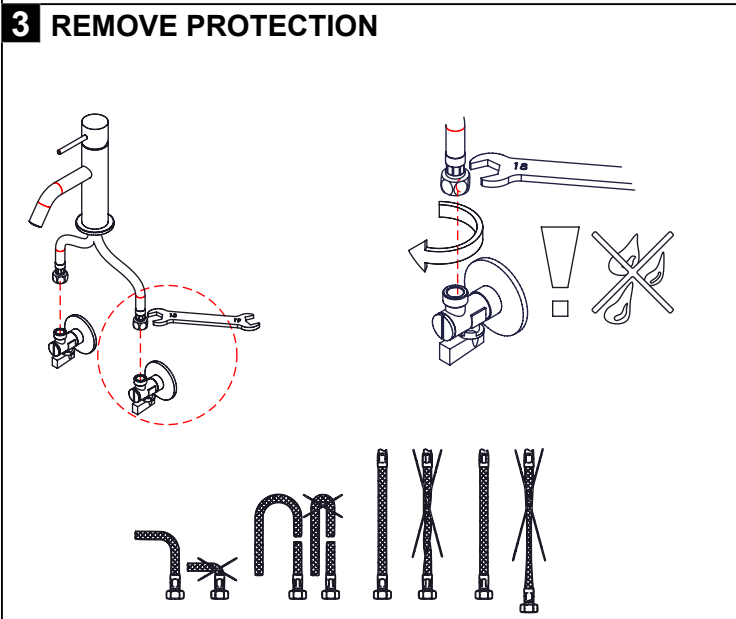
### 1 CONECTION



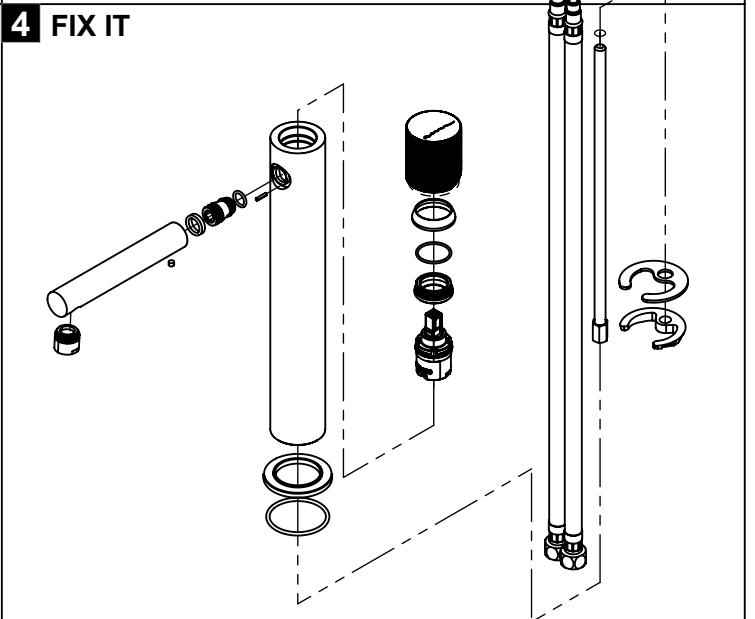
### 2 FIXED



### 3 REMOVE PROTECTION



### 4 FIX IT



### 5 FIX IT

### 6 MAINTENANCE

Rev. 31/07/2025