



SPIRAL050A

MONOCOMANDO LAV.ALTO BICA 180 MM
SPIRAL



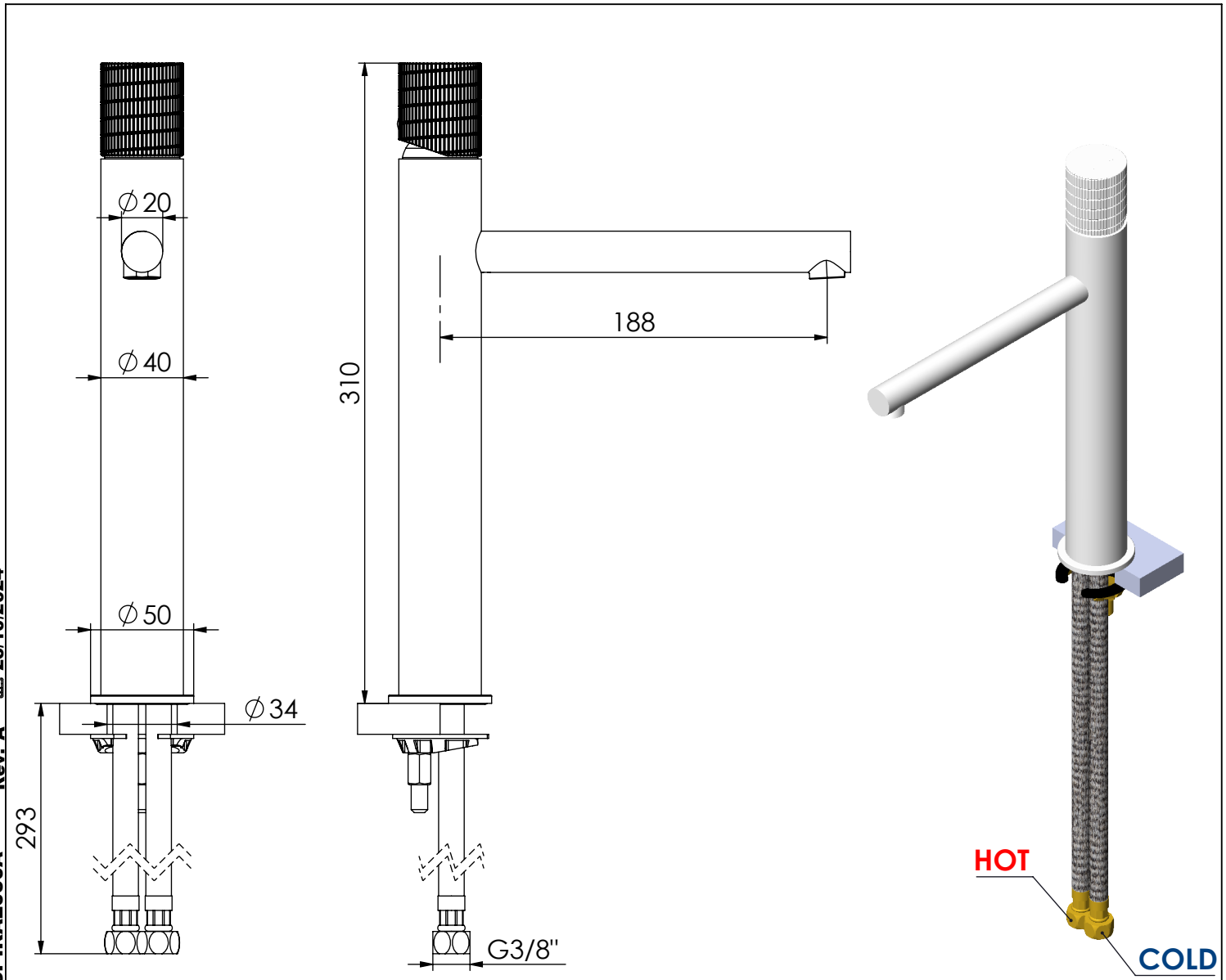
A S M T A P S[®]

W A T E R S O U L

EN WASHBASIN HIGH MIXER WITH 180MM
LONG SPOUT SPIRAL

FR MITIGEUR LAVABO HAUT AVEC BEC LONG
180MM SPIRAL

ES MONOMANDO LAVABO ALTO CON CAÑO
LARGO 180MM SPIRAL



SPIRAL050A Rev. A 25/10/2024



CARACTERÍSTICAS TÉCNICAS

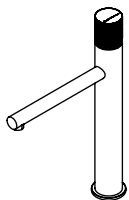
PRESSÃO RECOMENDADA: RECOMMENDED PRESSURE:	3 - 4 BAR
TEMPERATURA RECOMENDADA: RECOMMENDED TEMPERATURE:	15°C - 65°C
MATERIAIS: MATERIALS:	Latão
TEMPERATURA MÁXIMA: MAXIMUM TEMPERATURE:	70°C
CAUDAL MÁXIMO A 3 BAR: MAXIMUM FLOW AT 3 BAR:	5L/MIN
LIGAÇÃO DE ENTRADA: INPUT CONNECTION:	G3/8"
LIGAÇÃO DE SÉIDA: OUTPUT CONNECTION:	.
PESO (KG): WEIGHT (KG):	1,55
DIMENSÕES EMBALAGEM (MM): SIZE PACKAGING (MM):	367x250x80

ACABAMENTOS

CR - CROMADO CHROME CHROME CROMO
PR - PRETO MATE BLACK MATT NOIR MAT NEGRO MATE
BR - BRANCO MATE WHITE MATT BLANC MAT BLANCO MATE
ST - SATINOX SATINOX SATINOX SATINOX
AT - ANTRACITE ANTHRACITE ANTHRACITE ANTRACITA
GM - GUNMETAL GUNMETAL GUNMETAL GUNMETAL
GMM - GUNMETAL MATE GUNMETAL MATT GUNMETAL MAT GUNMETAL MATE
OR - DOURADO GOLD DORÉ DORADO
ORM - DOURADO MATE GOLD MATT DORÉ MAT DORADO MATE
CB - COBRE COPPER CUIVRE COBRE
CBM - COBRE MAT COPPER MAT CUIVRE MAT COBRE MATE

TECNOLOGIA

-  AC540C - Cartucho Ø35 Energy Saving
AC540C - Ø35 Energy Saving Cartridge
-  Abertura energia saving
Opening energy saving



SPIRAL050A

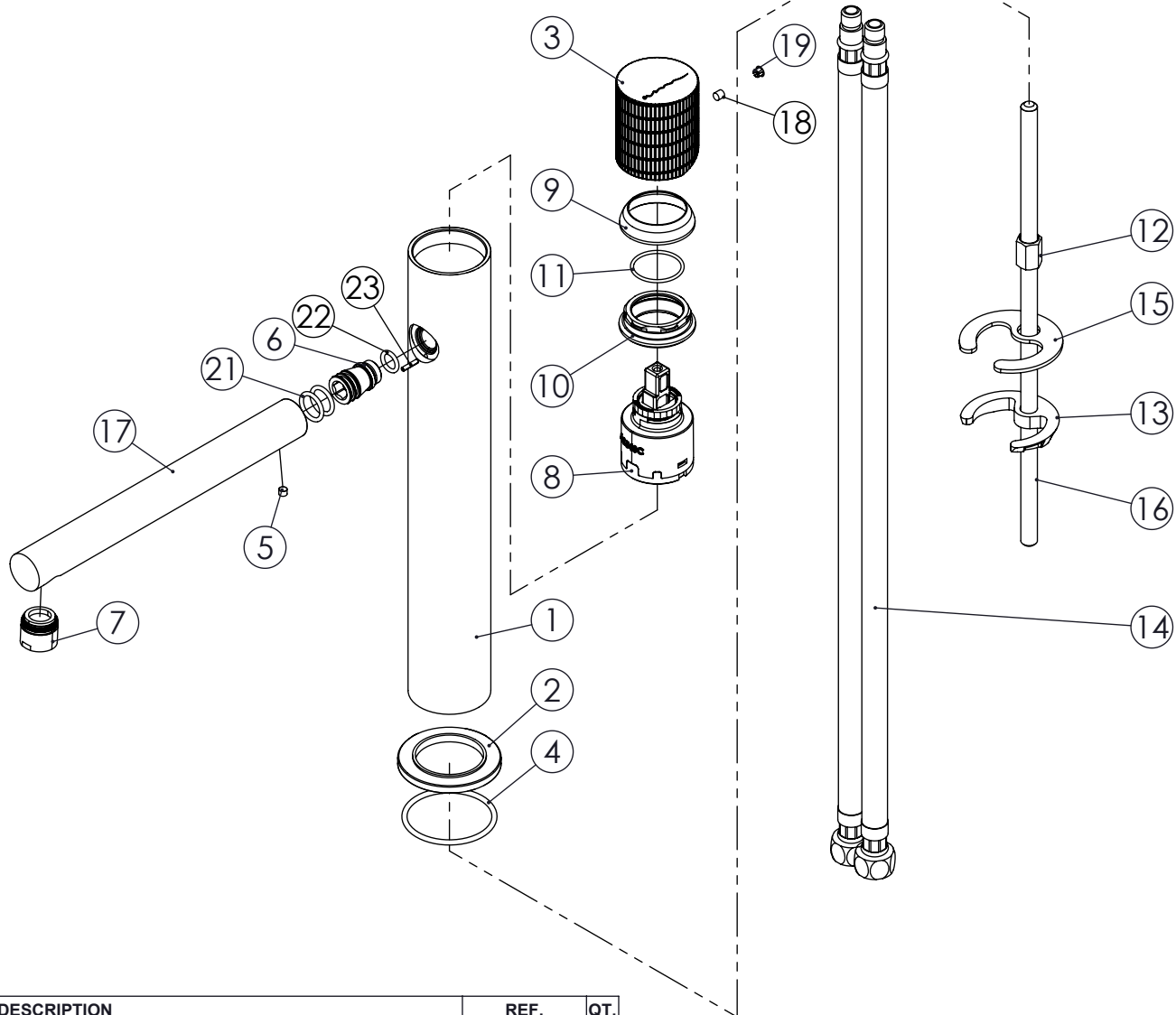
MONOCOMANDO LAV.ALTO BICA
180 MM SPIRAL



ASM TAPS®

WATER SOUL

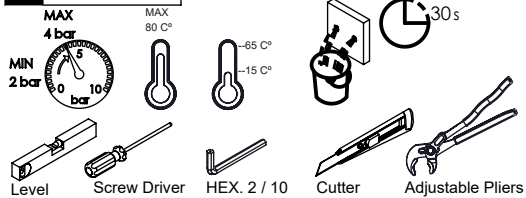
LISTA DE COMPONENTES



SPIRAL050A Rev. A 25/10/2024

Nº	DESCRIPTION	REF.	QT.
1	CORPO LAVATÓRIO ALTO CILÍNDRICA	100516	1
2	Pater Lavatório Cilíndrico	100016	1
3	MANÍPULO MONOCOMANDO SPIRAL	101390	1
4	Orings 41.00x2.50 NBR 70	001783	1
5	Perno Umbrako Din 914 M4-4 Inox A-2	09140400040IN	1
6	ÊMBOLO BICA LAVATÓRIO SPIRAL	101392	1
7	Perlator M18x1	AC1440	1
8	CARTUCHO 35 ENERGY SAVING	AC540C	1
9	Campânula Porca M37x1,5	100880	1
10	Porca M37x1,5 C_Oring	100881	1
11	Orings 23.00x1.50 NBR 70	001098	1
12	Fêmea Fixação M8	AC843	1
13	Ferradura	AC843	1
14	Ligação 500mm M10x1 G3/8"	AC843	2
15	Vedação Da Ferradura	AC843	1
16	Perno Fixação P Monoc. Alto	100258	1
17	BICA LAVATÓRIO CILÍNDRICA 180MM	100080	1
18	Perno Umbrako Din 916 M4-5 Inox A-2	09140400050IN	1
19	Dístico em ABS de 5.5mm Cromado	LH-PLCR4	1
20	Chave Bocas 16-17mm	000000	1
21	Orings 10.00x2.00 NBR 70	001367	2
22	Orings 8.00x1.90 NBR 70	001349	1
23	CAVILHA ELÁSTICA DIN 1481 Ø 2X10 INOX A-2	14810200100IN	1

! SERVICE

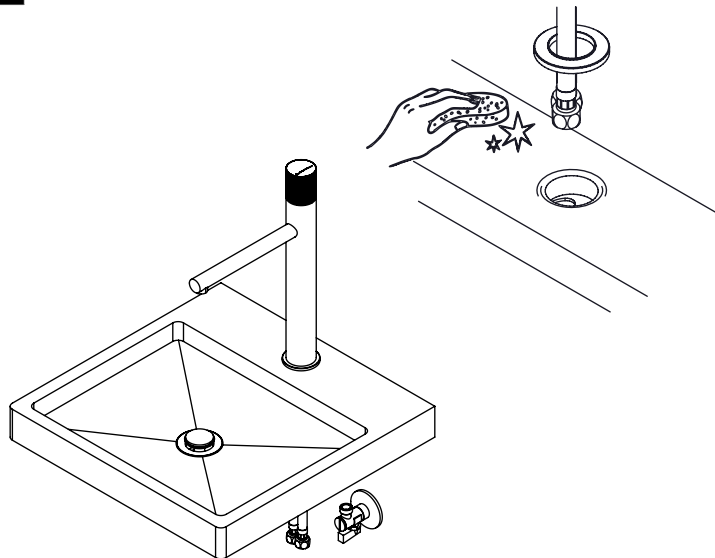


A S M T A P S ®

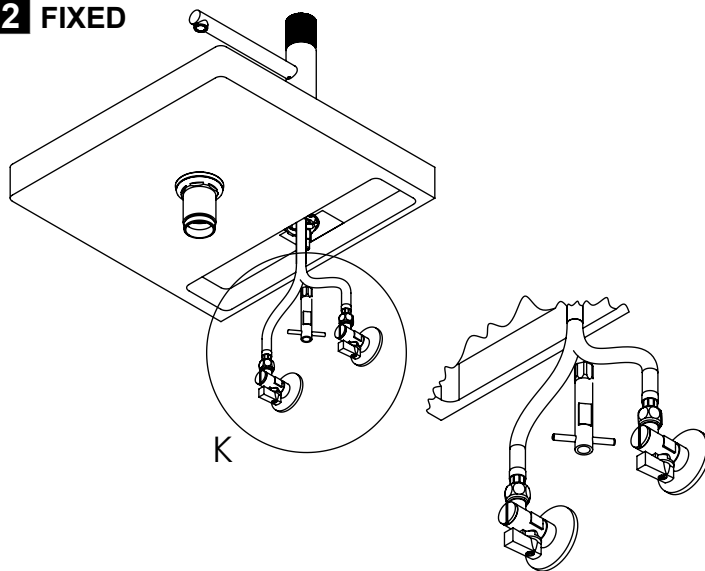
W A T E R S O U L

INSTALLATION MANUAL

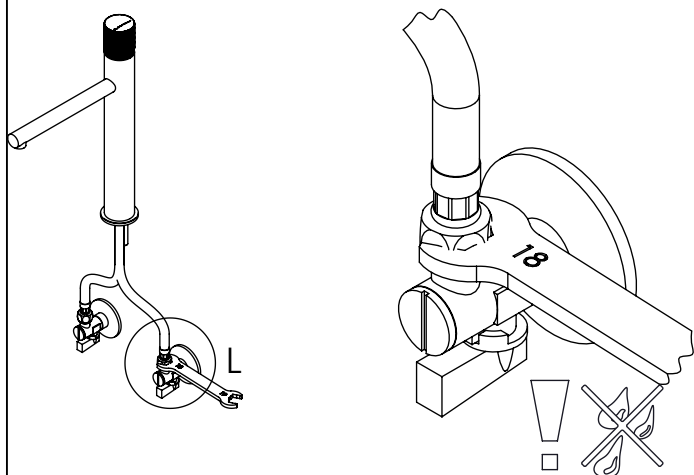
1 CONECTION



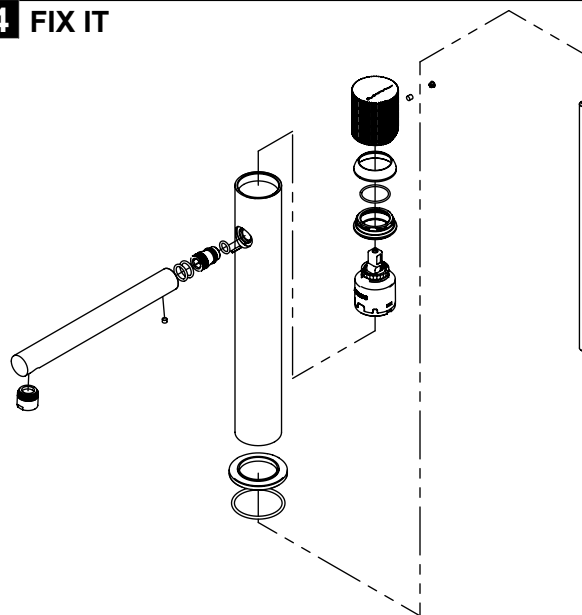
2 FIXED



3 REMOVE PROTECTION



4 FIX IT



5 FIX IT

6 MAINTENANCE

Rev. 25/10/2024