



# TERCLUX090C

MIST. EMBUTIR TERMOST. 2 VIAS COM CHUVEIRO DE MÃO LUX



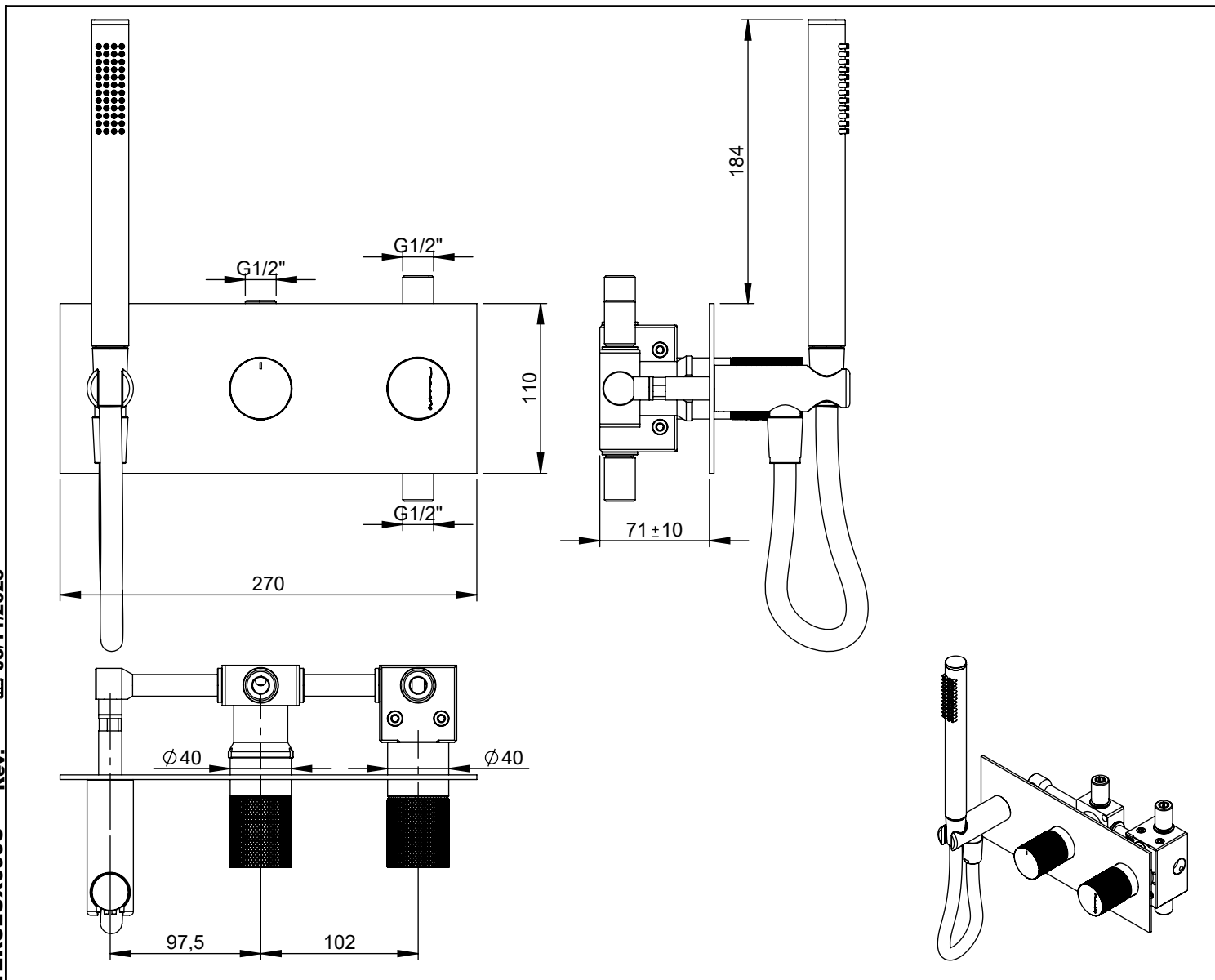
ASM TAPS®

WATER SOUL

**EN** CONCEALED 2 WAY THERMOST. MIXER WITH SET HAND SHOWER LUX

**FR** MÉLANG. ENCASTRÉ 2 VOIES THERM. AVEC KIT DOUCHE. À MAIN LUX

**ES** MEZCLADOR EMPOTRAR 2 VIAS TERM. SET DE DUCHA DE MANO LUX



TERCLUX090C Rev. 03/11/2025

## CARACTERÍSTICAS TÉCNICAS

PRESSÃO RECOMENDADA:  
RECOMMENDED PRESSURE: 3 - 4 BAR

TEMPERATURA RECOMENDADA:  
RECOMMENDED TEMPERATURE: 15°C - 65°C

MATERIAIS:  
MATERIALS: Latão

TEMPERATURA MÁXIMA:  
MAXIMUM TEMPERATURE: 70°C

CAUDAL MÁXIMO A 3 BAR:  
MAXIMUM FLOW AT 3 BAR: L/MIN

LIGAÇÃO DE ENTRADA:  
INPUT CONNECTION: G1/2"

LIGAÇÃO DE SÉIDA:  
OUTPUT CONNECTION: G1/2"

PESO (KG):  
WEIGHT (KG): 4.71

DIMENSÕES EMBALAGEM (MM):  
SIZE PACKAGING (MM): 285x200x170

## ACABAMENTOS

CR - CROMADO | CHROME | CHROME | CROMO

PR - PRETO MATE | BLACK MATT | NOIR MAT | NEGRO MATE

BR - BRANCO MATE | WHITE MATT | BLANC MAT | BLANCO MATE

ST - SATINOX | SATINOX | SATINOX | SATINOX

AT - ANTRACITE | ANTHRACITE | ANTHRACITE | ANTRACITA

GM - GUNMETAL | GUNMETAL | GUNMETAL | GUNMETAL

GMM - GUNMETAL MATE | GUNMETAL MATT | GUNMETAL MAT | GUNMETAL MATE

OR - DOURADO | GOLD | DORÉ | DORADO

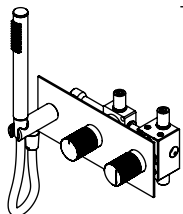
ORM - DOURADO MATE | GOLD MATT | DORÉ MAT | DORADO MATE

CB - COBRE | COPPER | CUIVRE | COBRE

CBM - COBRE MAT | COPPER MAT | CUIVRE MAT | COBRE MATE

## TECNOLOGIA

- AC1180-Distribuidor Misturadora Termostática  
AC1180-Distributor Thermostatic Mixer
- AC1940 - Cartucho termostático Mini Kerox  
AC1940 - Mini Thermostatic Cartridge Kerox
- Embutido a parede  
Built-in to wall
- Termostática  
Thermostatic
- Chuveiro de mão cilíndrico latão  
Brass cylindrical hand shower
- Ligação banheira/duche 1,70mt Silicone  
Bath shower connection 1,70mt Silicone



# TERCLUX090C

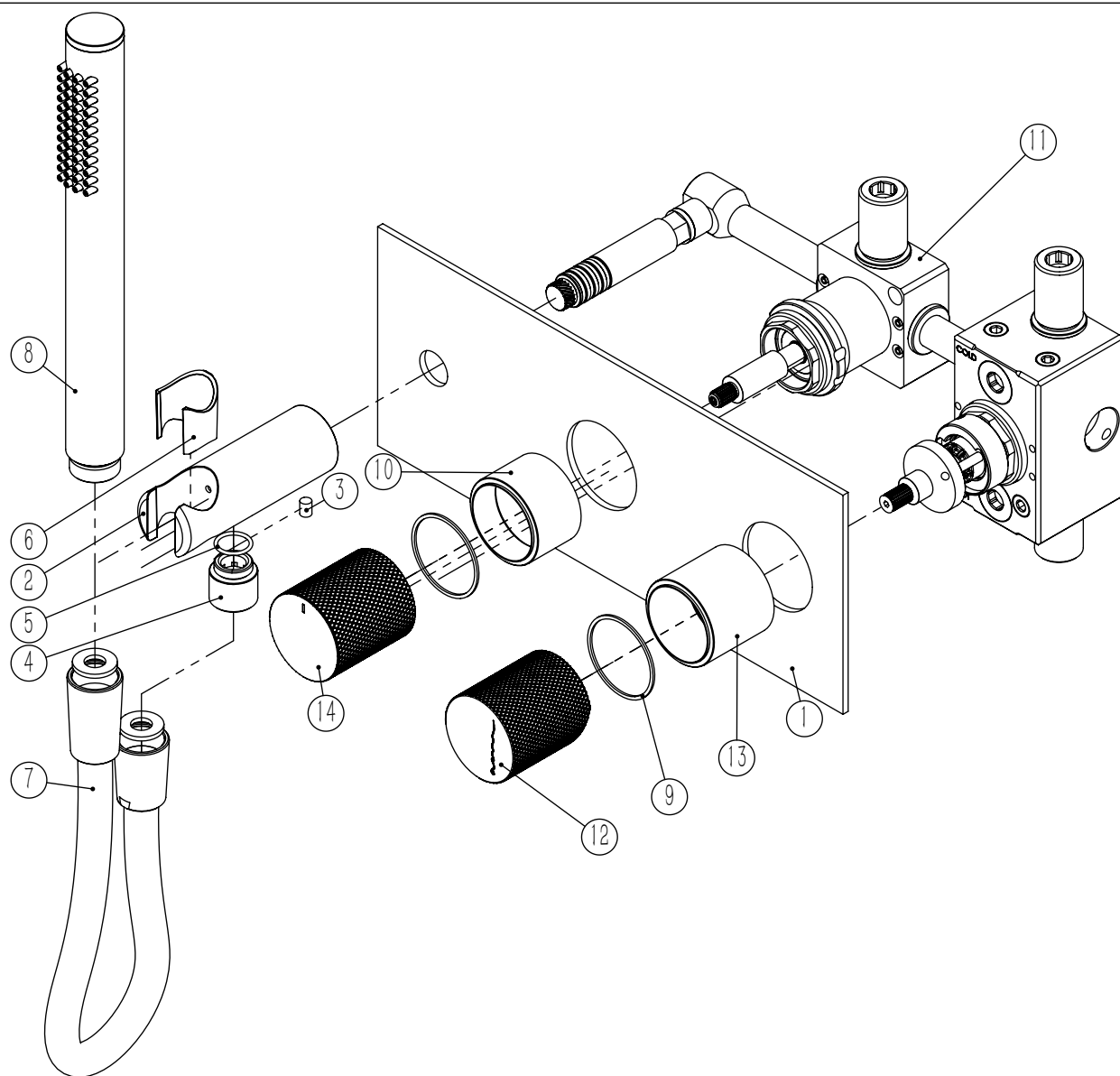
MIST. EMBUTIR TERMOST. 2 VIAS  
COM CHUVEIRO DE MÃO LUX



ASM TAPS®

WATER SOUL

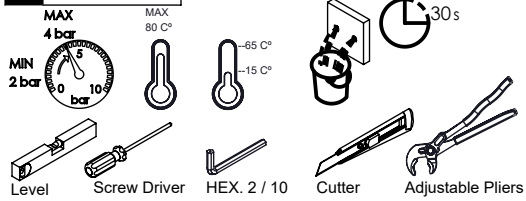
## LISTA DE COMPONENTES



TERCLUX090C Rev. 03/11/2025

Nº	DESCRIPTION	REF.	QT.
1	Esp. P. Monoc. 1 via 3. saídas C. Tomada de água	100503	1
2	Tomada Água Cilíndrica	100117	1
3	Perno Umbrako Din 914 M5-8 Inox A-2	09140500080IN	1
4	Casquilho P. Base Chuveiro	100052	1
5	Orings 13.00x1.50 NBR 70	001078	1
6	PROTEÇÃO INTERIOR CHUVEIRO TOMADA DE ÁGUA	AC2040	1
7	LIGAÇÃO BANHEIRA/DUCHE 1,70MT SILICONE	AC781	1
8	CHUVEIRO MÃO CILÍNDRICO LATÃO	AC391A	1
9	Anilho Nylon Ø35x38x1	T112378	2
10	Campânula Cartucho Mist. Embutir Termostática 2 Vias	100636	1
11	BOX MIST. EMBUTIR TERMOSTÁTICA 2 VIAS C/ CHUVEIRO MÃO	INT118	1
12	MANÍPULO LUX EMBUTIDOS	AC2080	1
13	CAMPANULA 35 TERMOSTÁTICA 2 VIAS	101515	1
14	MANÍPULO DISTRIBUIDOR LUX	AC2090	1

# ! SERVICE



# TERCLUX090C

MIST. EMBUTIR TERMOST. 2 VIAS  
COM CHUVEIRO DE MÃO LUX

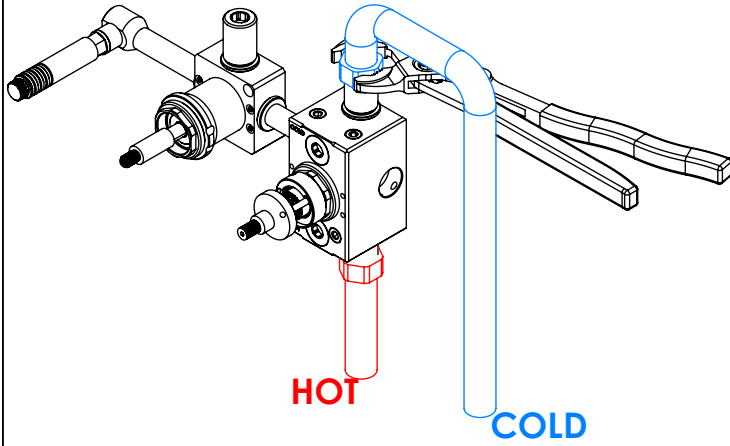


A S M T A P S ®

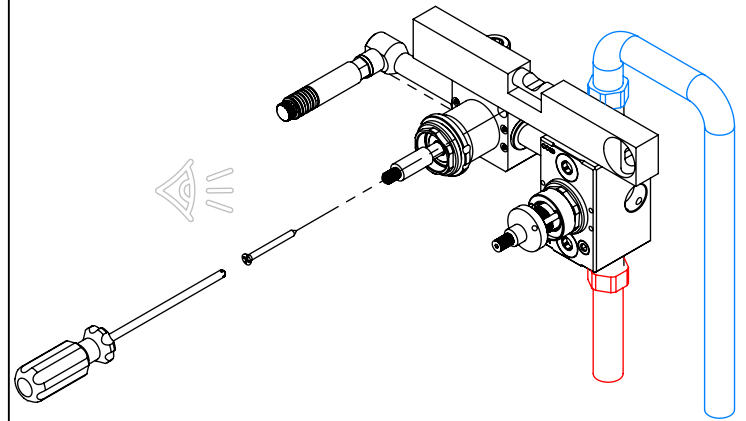
W A T E R S O U L

## INSTALLATION MANUAL

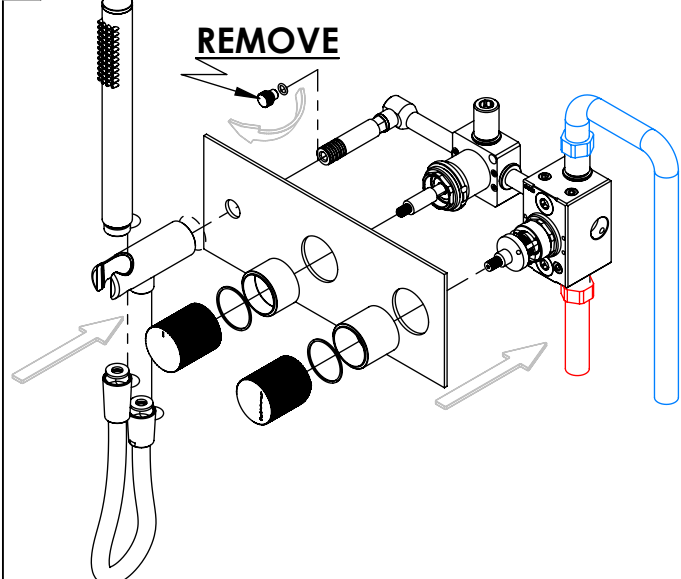
### 1 CONECTION



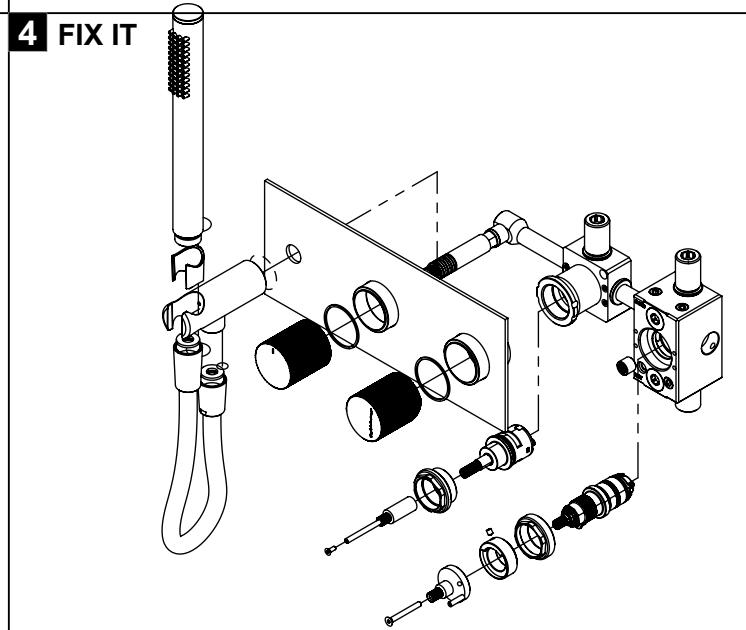
### 2 FIXED



### 3 REMOVE PROTECTION



### 4 FIX IT



### 5 FIX IT

### 6 MAINTENANCE

03/11/2025  
Rev.  
TERCLUX090C