

# TERCROSS090C

MIST.EMBUTIR TERMOST.2 VIAS COM CHUVEIRO DE MÃO CROSSLINE



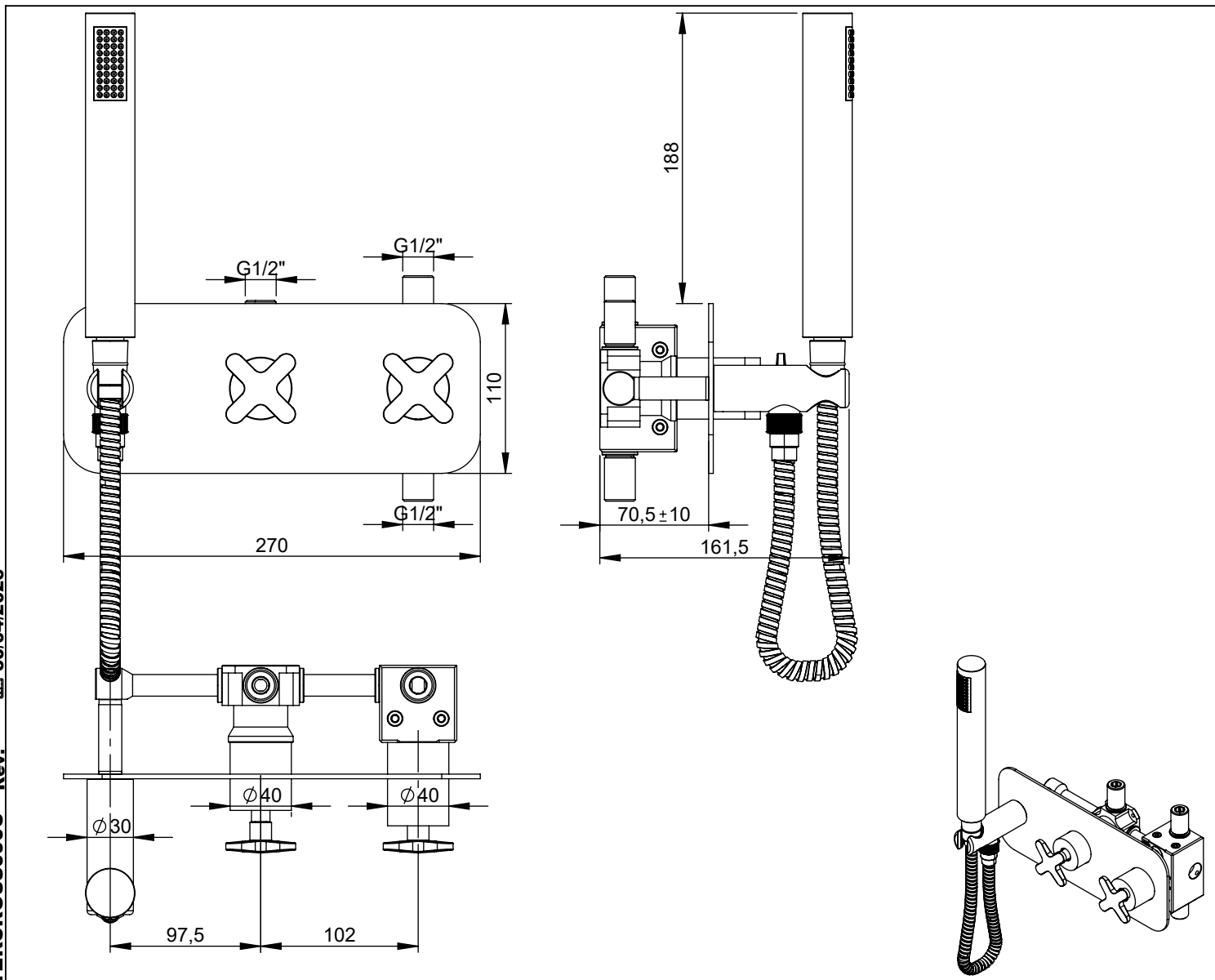
ASM TAPS®

WATER SOUL

**EN** CONCEALED 2 WAY THERMOST. MIXER WITH SET HAND SHOWER CROSSLINE

**FR** MÉLANG.ENCASTRÉ 2 VOIES THERM.AVEC KIT DOUCHE. À MAIN CROSSLINE

**ES** MEZCLADOR EMPOTRAR 2 VIAS TERM. SET DE DUCHA DE MANO CROSSLINE



TERCROSS090C Rev. 30/04/2026

## CARACTERÍSTICAS TÉCNICAS

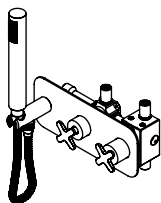
PRESSÃO RECOMENDADA: RECOMMENDED PRESSURE:	3 - 4 BAR
TEMPERATURA RECOMENDADA: RECOMMENDED TEMPERATURE:	15°C - 65°C
MATERIAIS: MATERIALS:	Latão
TEMPERATURA MÁXIMA: MAXIMUM TEMPERATURE:	70°C
CAUDAL MÁXIMO A 3 BAR: MAXIMUM FLOW AT 3 BAR:	L/MIN
LIGAÇÃO DE ENTRADA: INPUT CONNECTION:	G1/2"
LIGAÇÃO DE SÉIDA: OUTPUT CONNECTION:	G1/2"
PESO (KG): WEIGHT (KG):	4,71
DIMENSÕES EMBALAGEM (MM): SIZE PACKAGING (MM):	285x200x170

## ACABAMENTOS

CR - CROMADO   CHROME   CHROME   CROMO
PR - PRETO MATE   BLACK MATT   NOIR MAT   NEGRO MATE
BR - BRANCO MATE   WHITE MATT   BLANC MAT   BLANCO MATE
ST - SATINOX   SATINOX   SATINOX   SATINOX
AT - ANTRACITE   ANTHRACITE   ANTHRACITE   ANTRACITA
GM - GUNMETAL   GUNMETAL   GUNMETAL   GUNMETAL
GMM - GUNMETAL MATE   GUNMETAL MATT   GUNMETAL MAT   GUNMETAL MATE
OR - DOURADO   GOLD   DORÉ   DORADO
ORM - DOURADO MATE   GOLD MATT   DORÉ MAT   DORADO MATE
CB - COBRE   COPPER   CUIVRE   COBRE
CBM - COBRE MAT   COPPER MAT   CUIVRE MAT   COBRE MATE

## TECNOLOGIA

-  AC1180-Distribuidor Misturadora Termostática  
AC1180-Distribuidor Thermostatic Mixer
-  AC1940 - Cartucho termostático Mini Kerox  
AC1940 - Mini Thermostatic Cartridge Kerox
-  Embutido a parede  
Built-in to wall
-  Termostática  
Thermostatic
-  Chuveiro de mão cilíndrico  
Cylindrical hand shower
-  Ligação banheira/ duche 1,70mt Normal  
Normal Bath shower connection 1,70mt



# TERCROSS090C

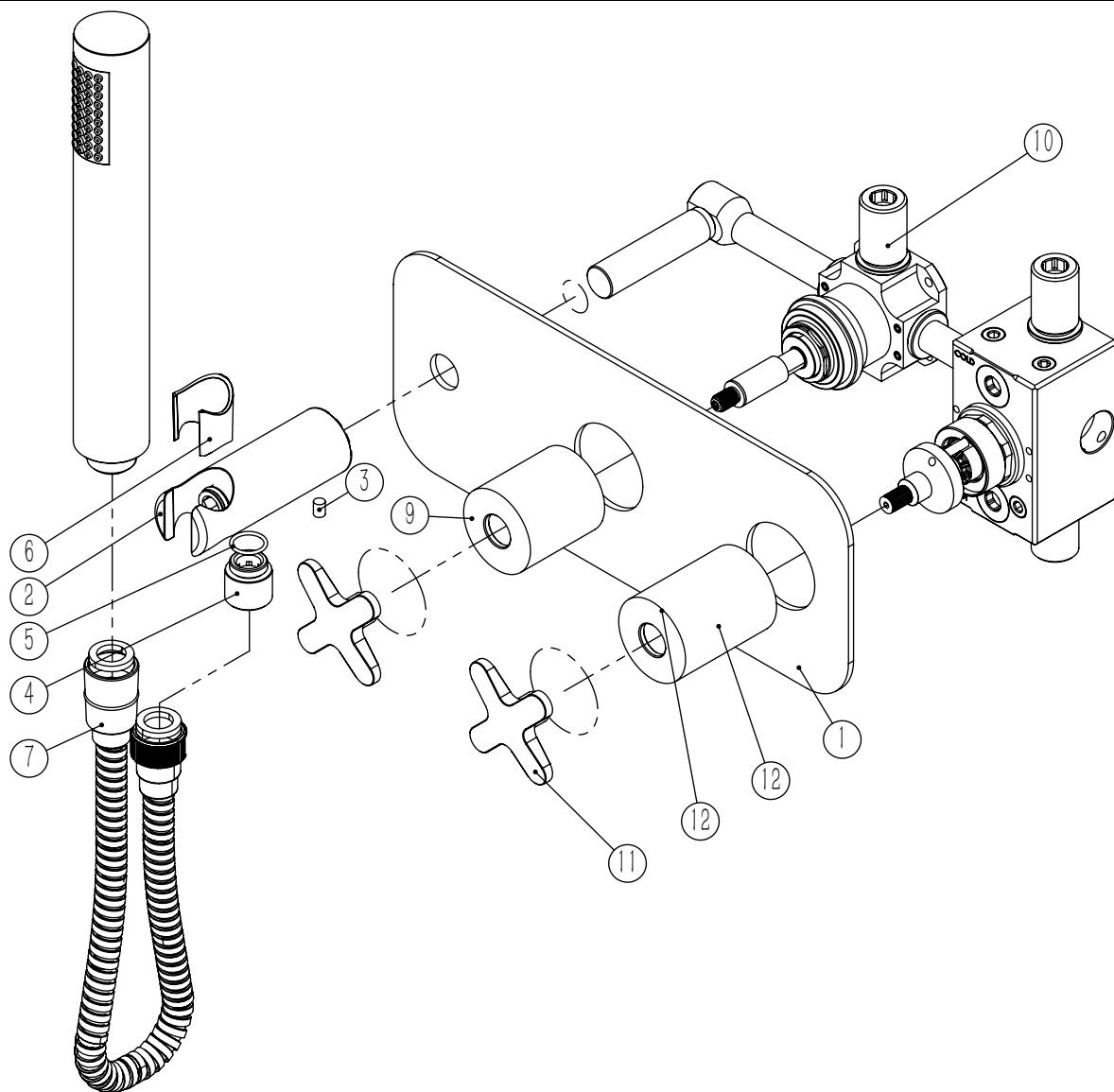
MIST. EMBUTIR TERMOST. 2 VIAS  
COM CHUVEIRO DE MÃO  
CROSSLINE



ASM TAPS®

WATER SOUL

## LISTA DE COMPONENTES



TERCROSS090C Rev. 30/04/2026

Nº	DESCRIPTION	REF.	QT.
1	Esp. P. Monoc. 1 via 3. saídas C. Tomada de água BIA	100971	1
2	Tomada Água Cilíndrica	100117	1
3	Perno Umbrako Din 914 M5-8 Inox A-2	09140500080IN	1
4	Casquilho P. Base Chuveiro	100052	1
5	Orings 13.00x1.50 NBR 70	001078	1
6	PROTEÇÃO INTERIOR CHUVEIRO TOMADA DE ÁGUA	AC2040	1
7	LIGAÇÃO CHUVEIRO 1.75 MT CROMO	AC800A	1
8	Chuveiro Cilíndrico	AC391	1
9	Campanula TERCZ080	101046	1
10	BOX MIST. EMBUTIR TERMOSTÁTICA 2 VIAS C/ CHUVEIRO MÃO	INT118	1
11	MANÍPULO CROSSLINE	AC2360	2
12	CAMPANULA TERC TERMOSTATICO	101523	1
13	PONTEIRA BICA PAREDE SLIMASM	100038	1
14	Orings 10.00x2.00 NBR 70	001367	4

# ! SERVICE



# TERCROSS090C

MIST. EMBUTIR TERMOST. 2 VIAS  
COM CHUVEIRO DE MÃO  
CROSSLINE

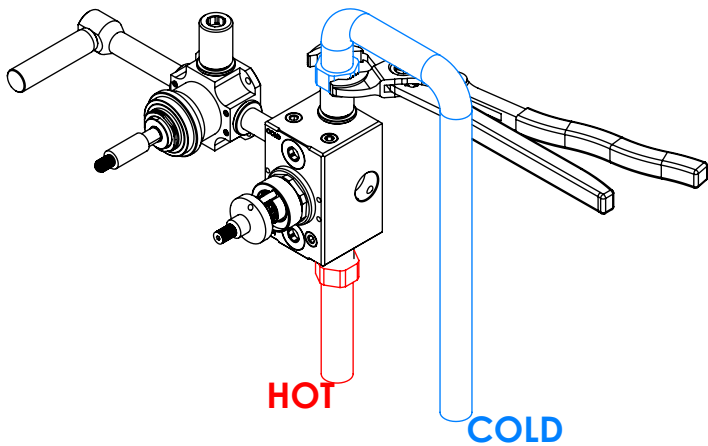


A S M T A P S ®

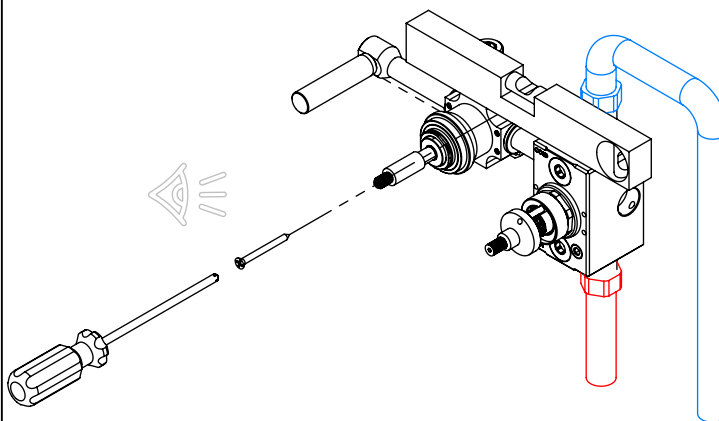
W A T E R S O U L

## INSTALLATION MANUAL

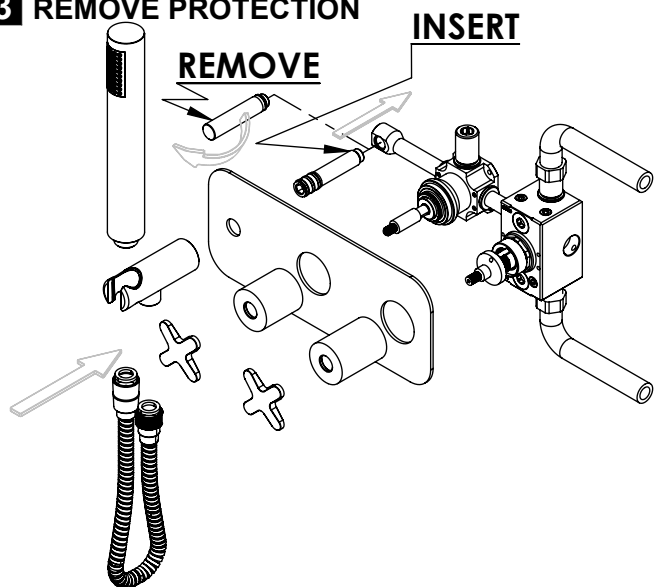
### 1 CONECTION



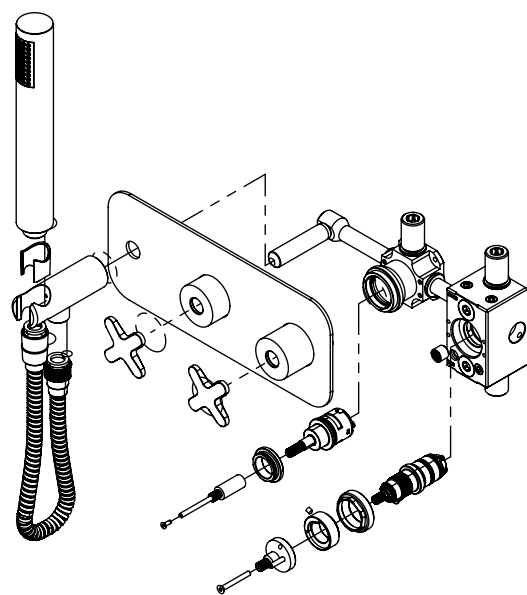
### 2 FIXED



### 3 REMOVE PROTECTION



### 4 FIX IT



### 5 FIX IT

### 6 MAINTENANCE

30/04/2026  
Rev.  
TERCROSS090C